



**Działania pomiarowe oraz badawcze
dotyczące rozpoznania i ewentualnej neutralizacji materiałów niebezpiecznych
zalegających na dnie Morza Bałtyckiego dla lokalizacji w obszarach:
wraku statku Franken, Głębi Gdańskiej i Rynny Słupskiej**

uzyskane rezultaty w aspekcie rozpoznania warunków środowiska

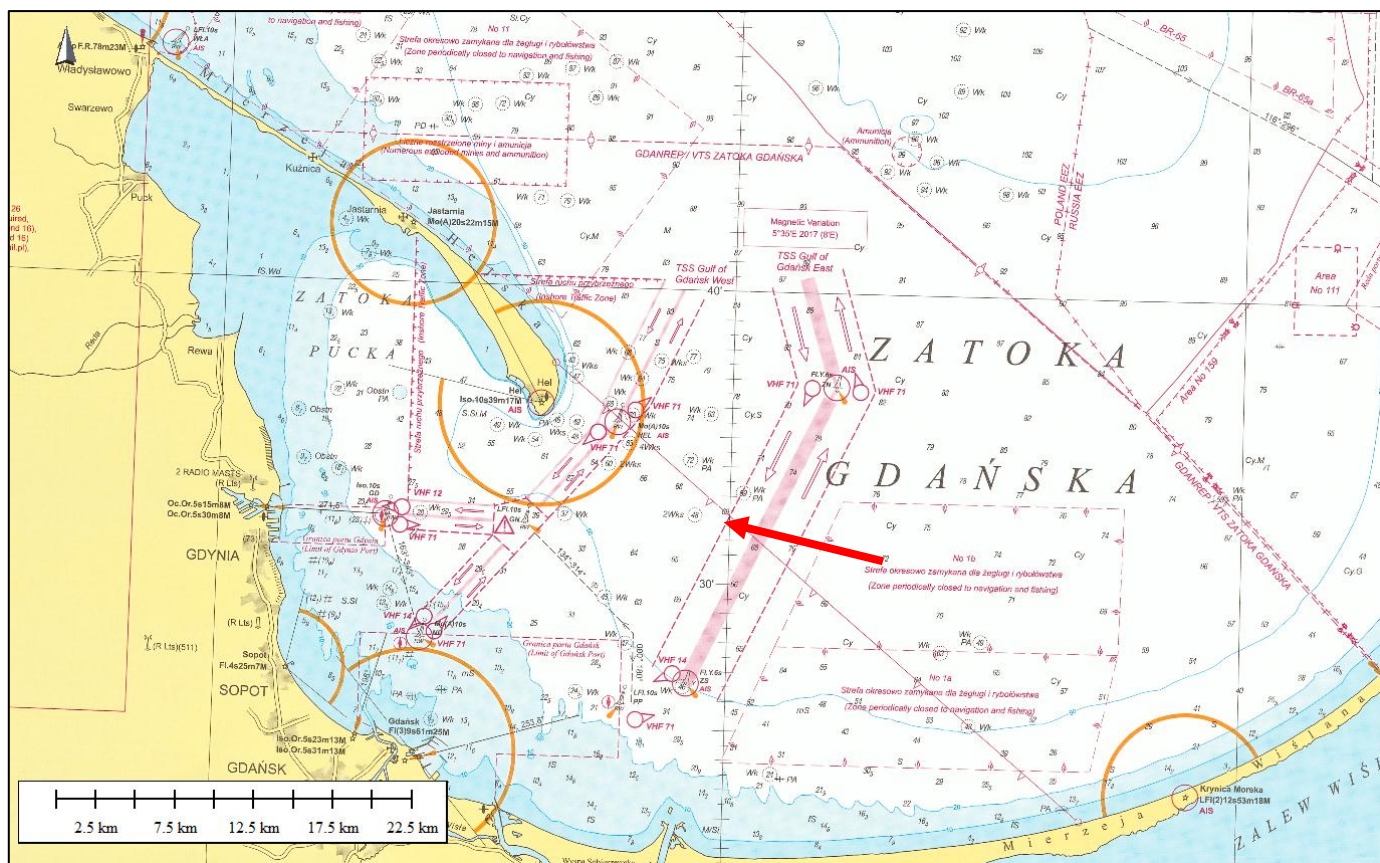
Radostaw Wróblewski
z Zespołem



MEWO



T/S Franken



Tankowiec o napędzie mechanicznym,
wcielony do służby 17 marca 1943 roku,
zatopiony 8 kwietnia 1945 roku przez lotnictwo
radzieckie.



MEWO

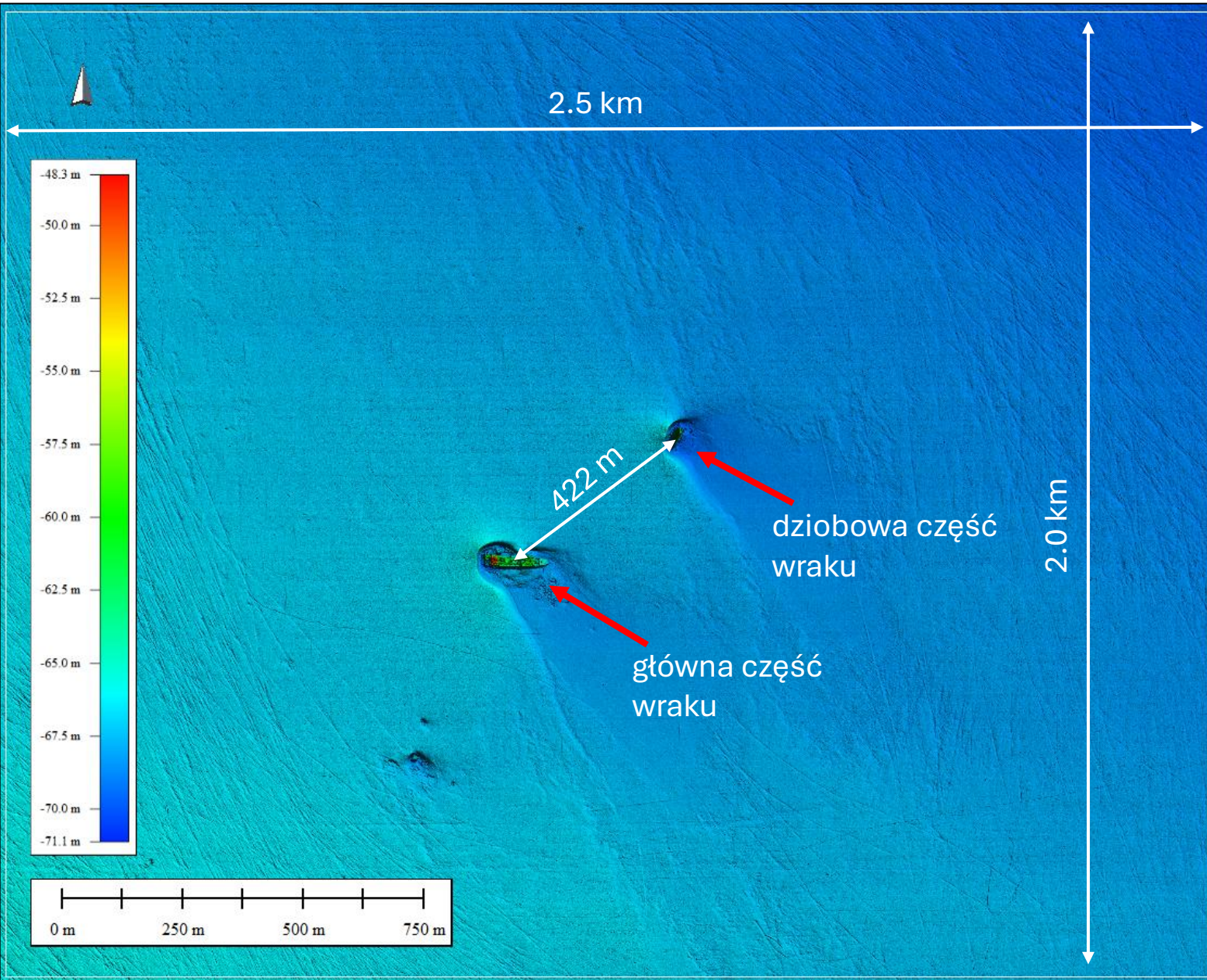




Powierzchnia obszaru badań wynosi 5 km²

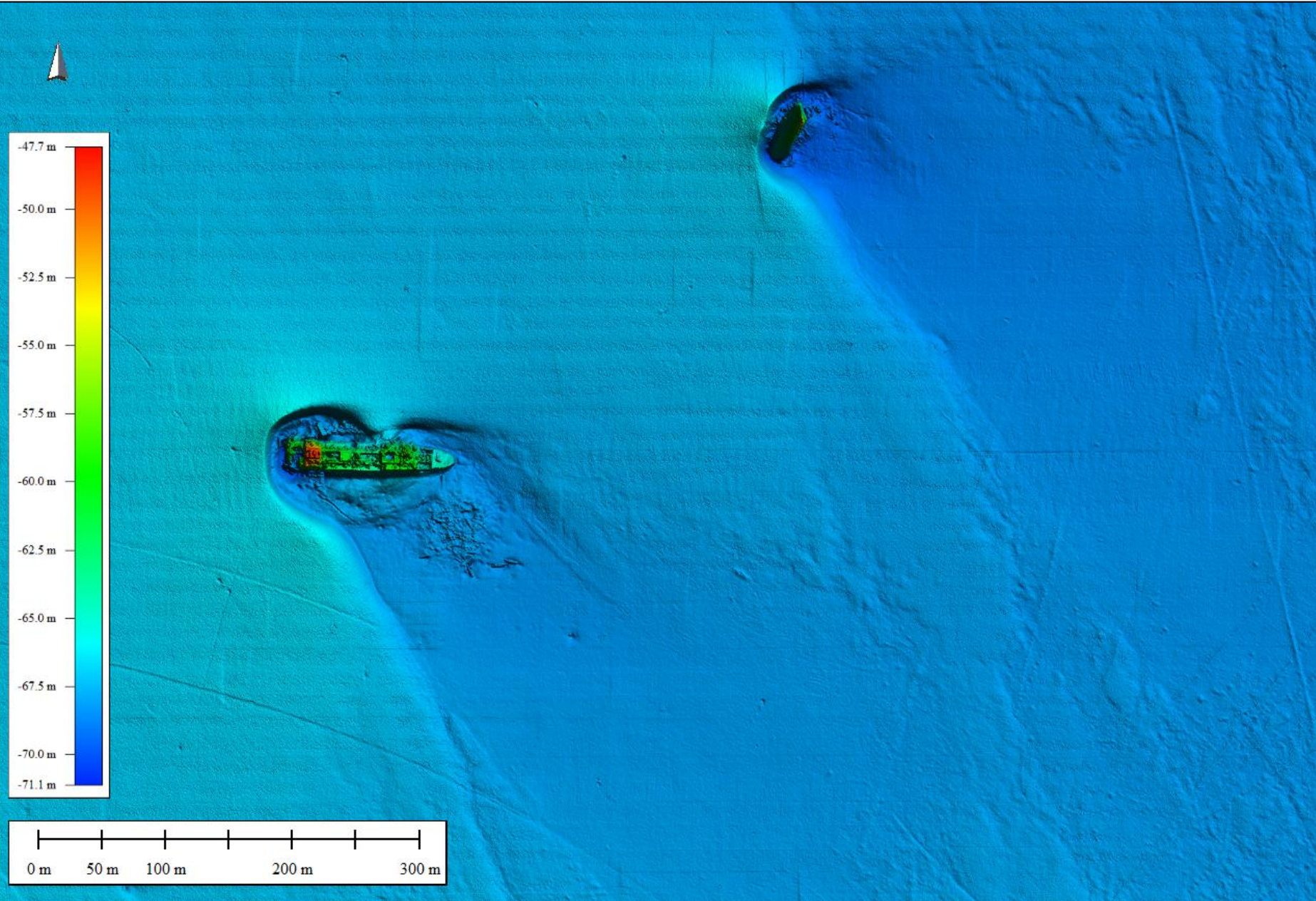


MEWO

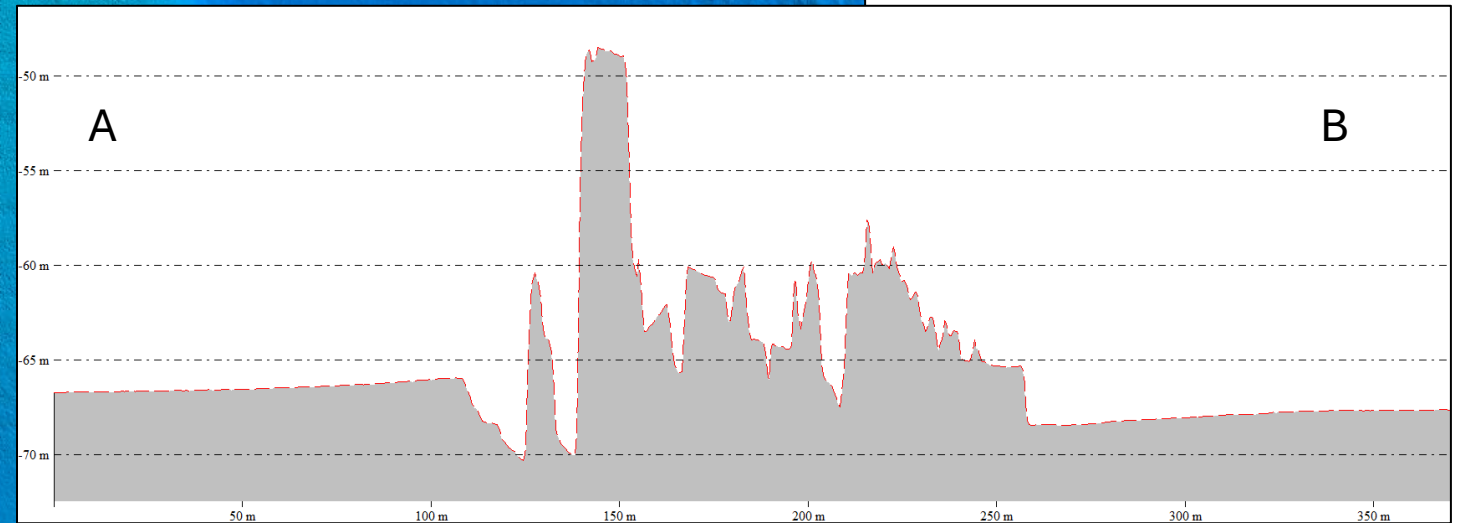
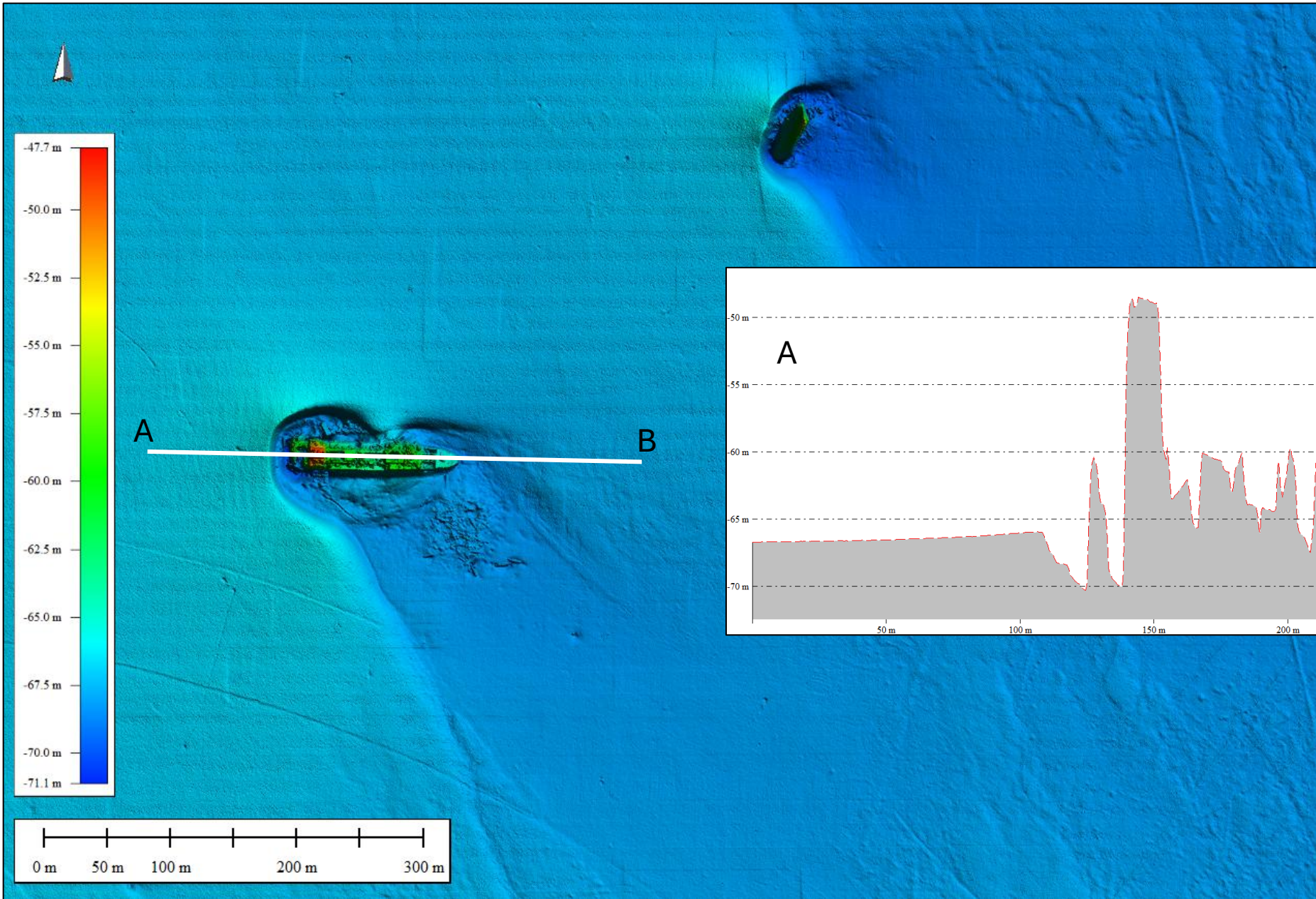


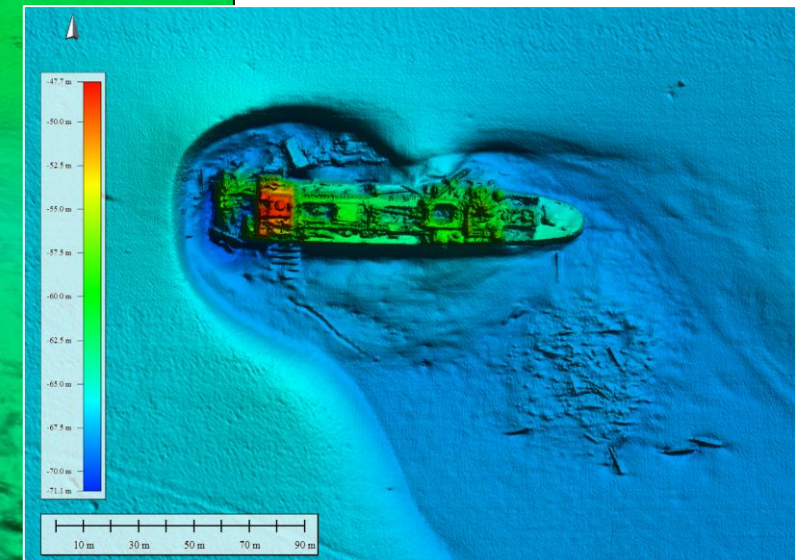
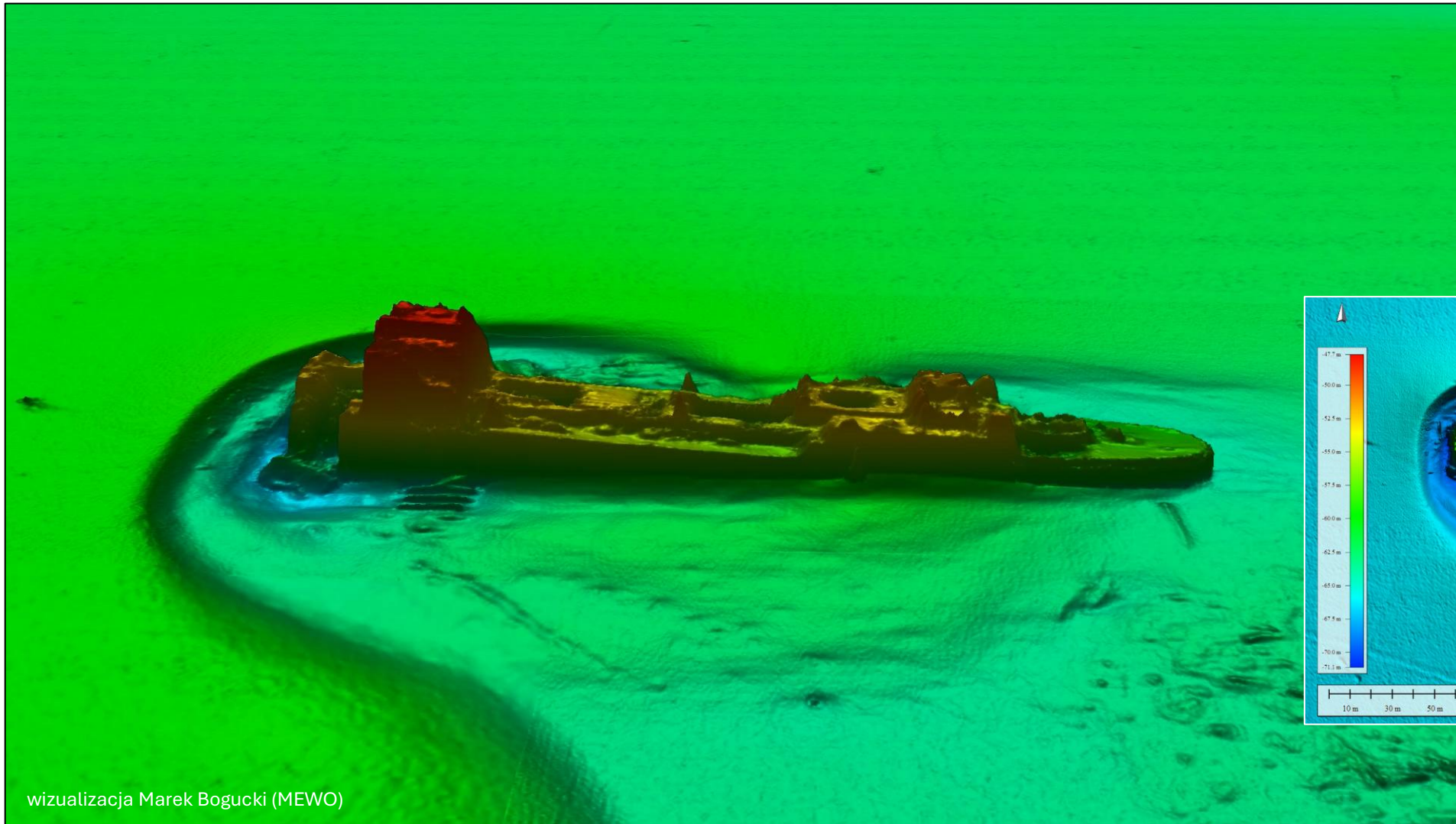


MEWO



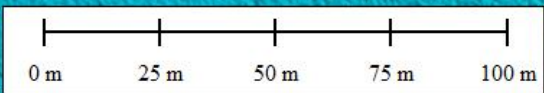
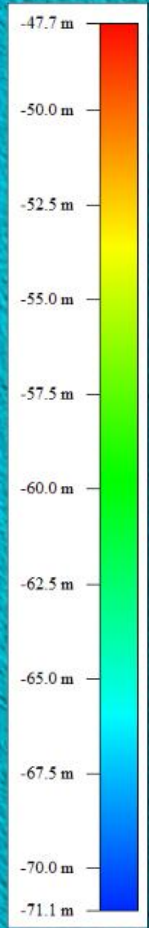
0 m 50 m 100 m 200 m 300 m





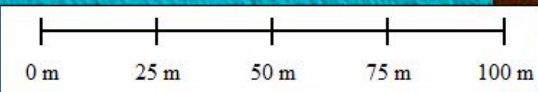
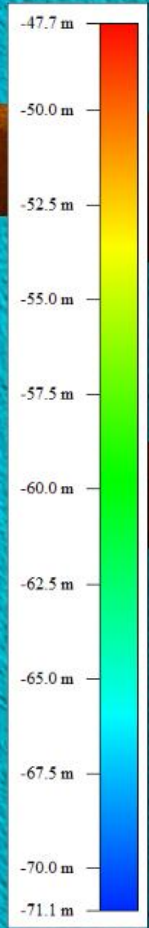
wizualizacja Marek Bogucki (MEWO)





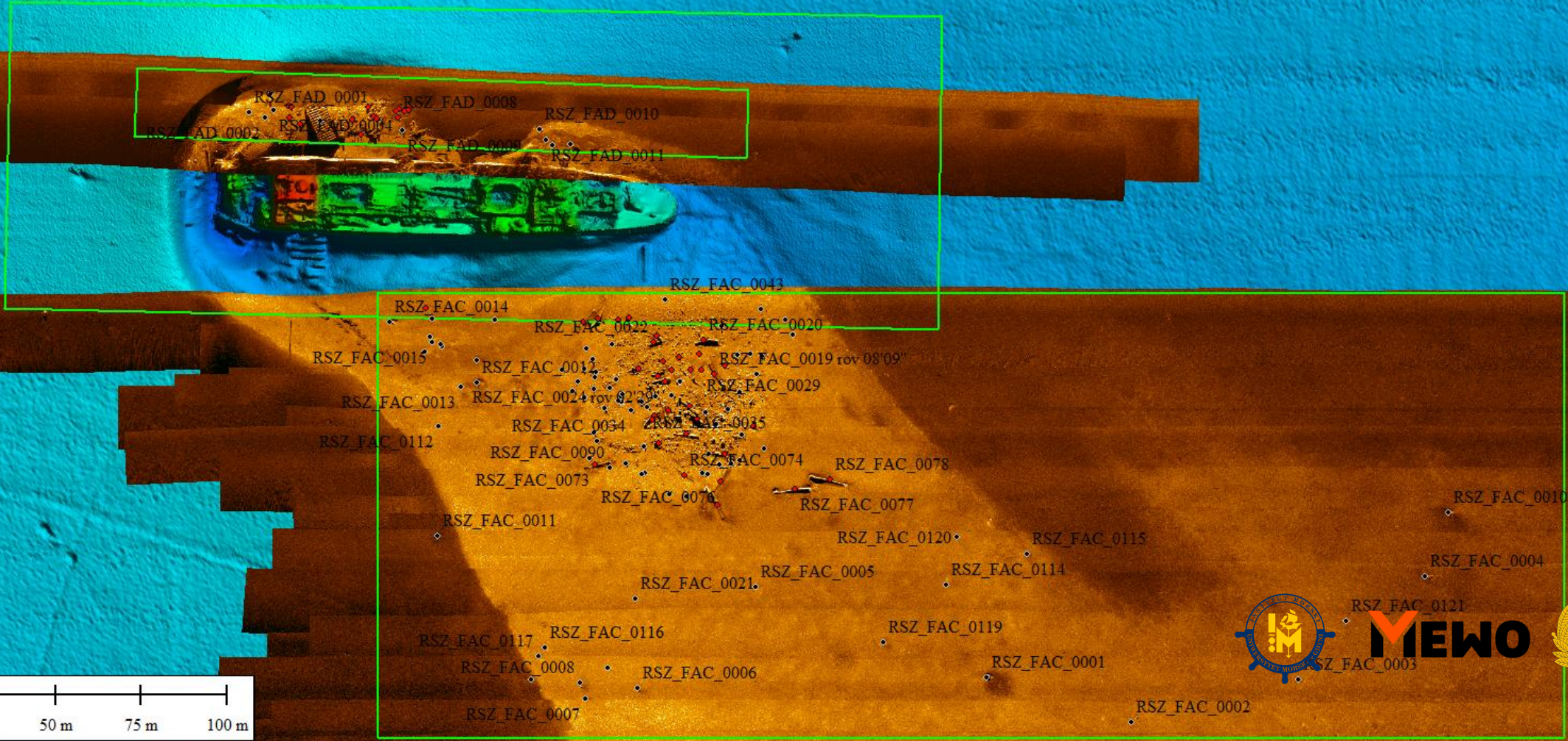
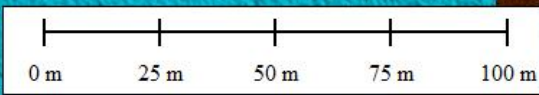
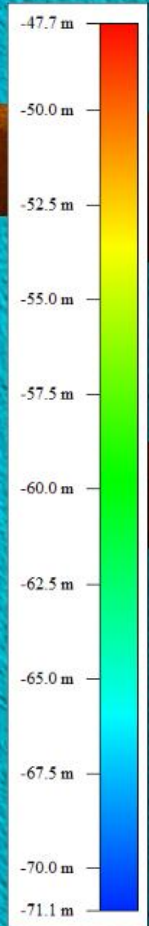
MEWO





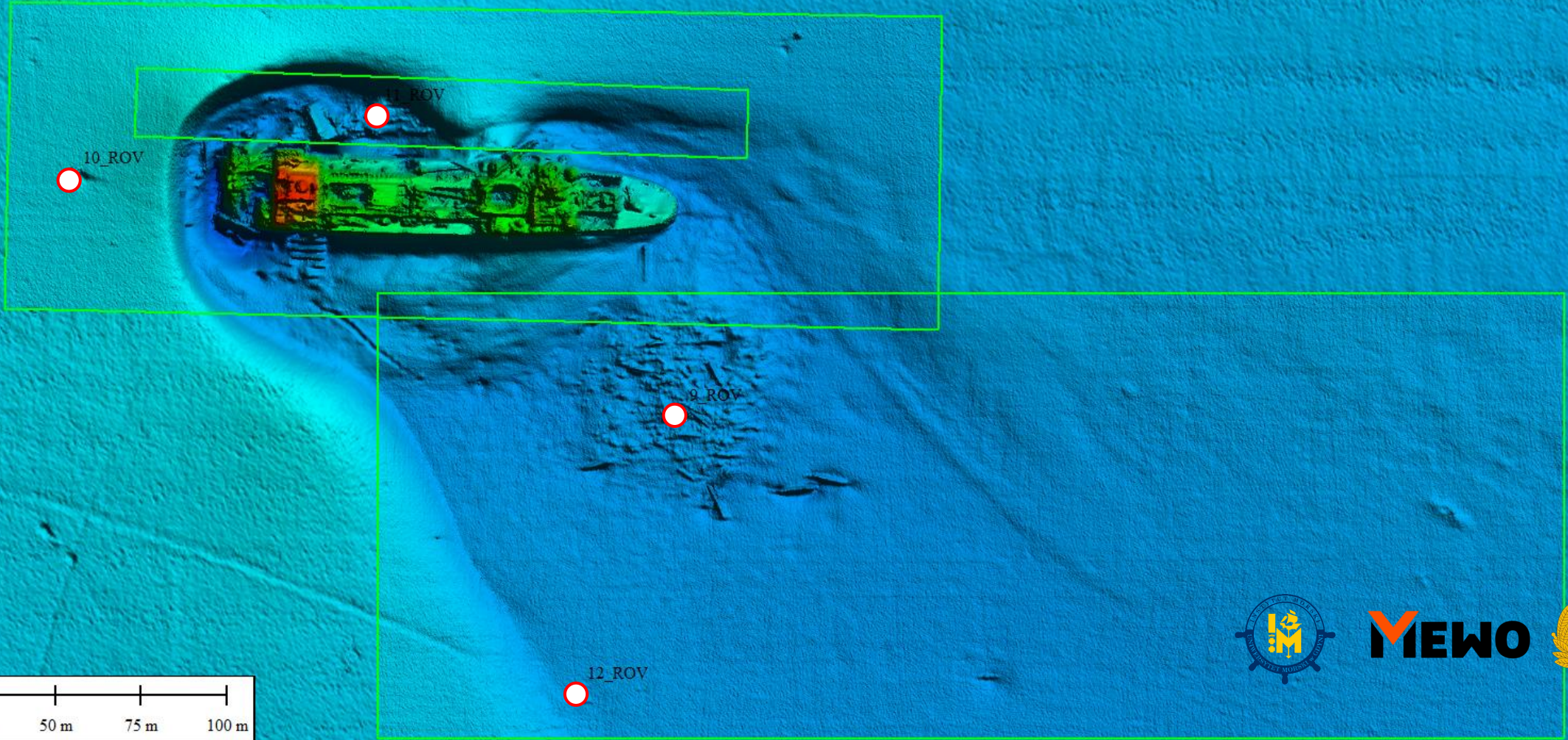
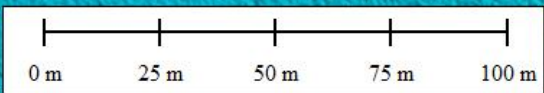
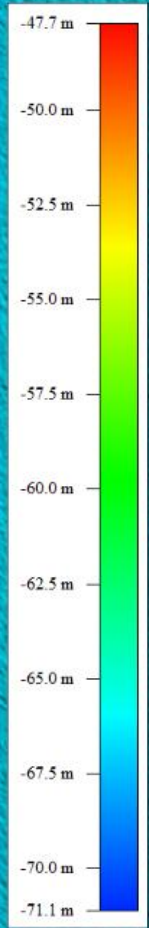
MEWO





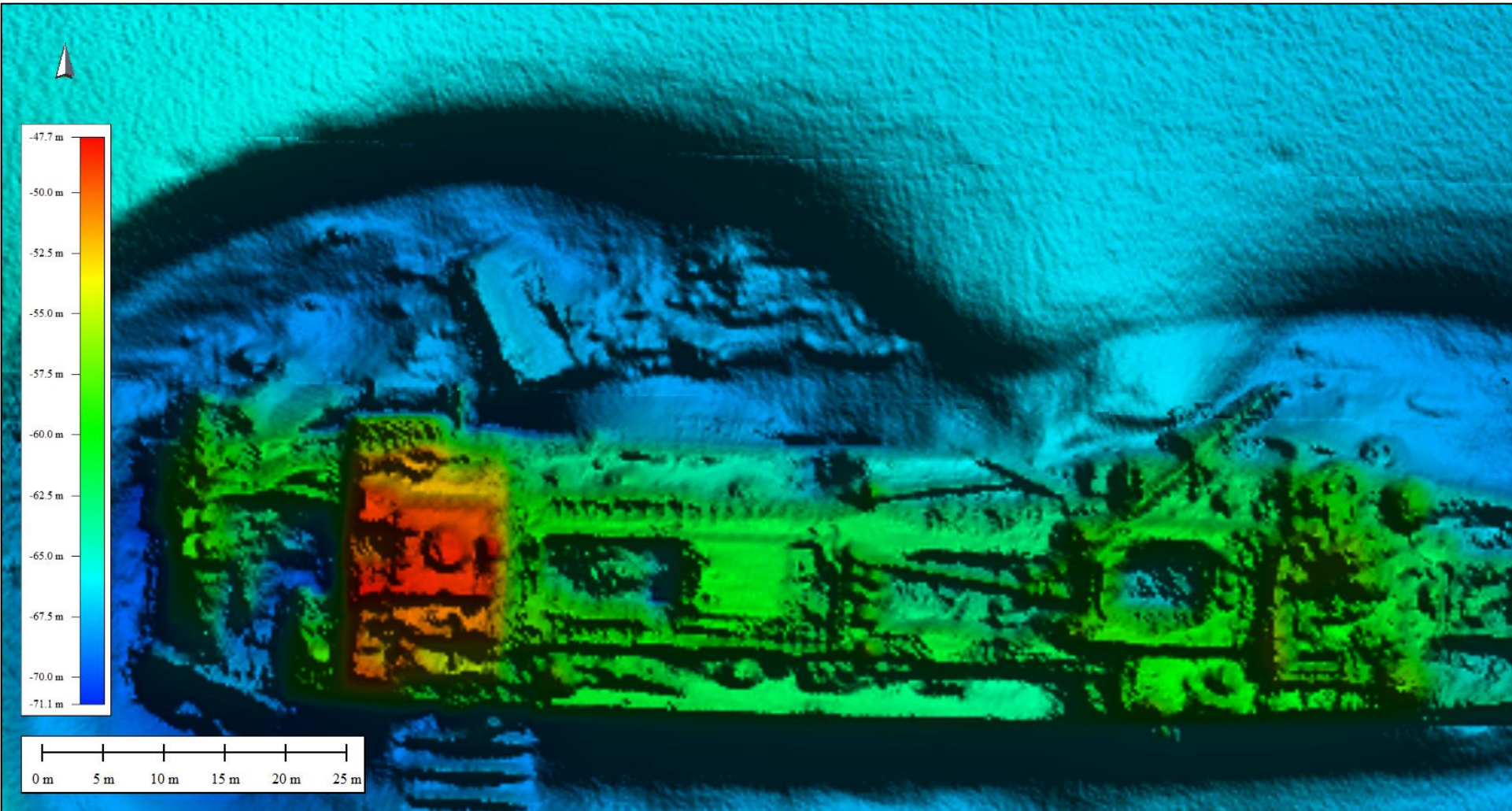
MEWO

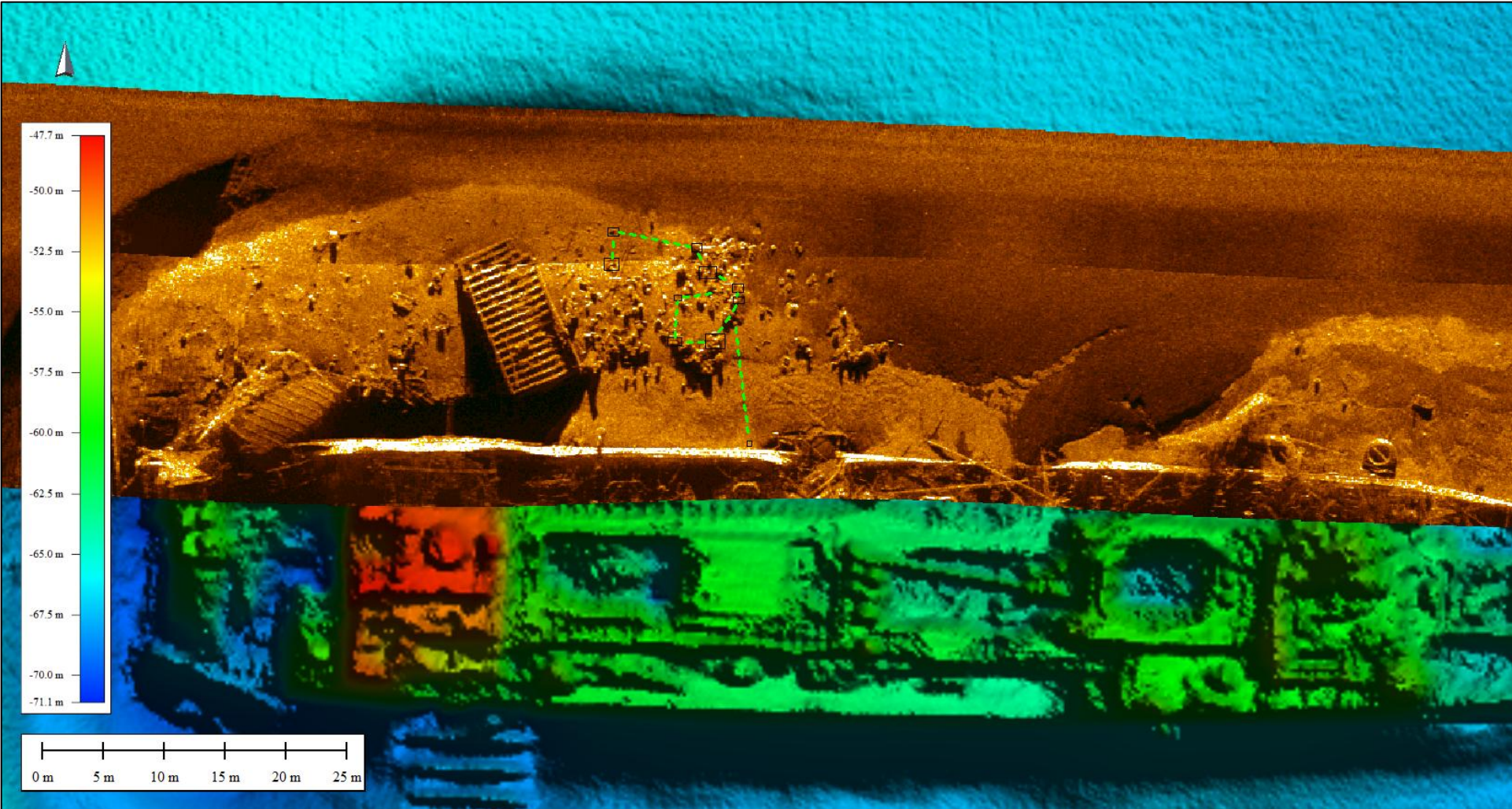




MEWO





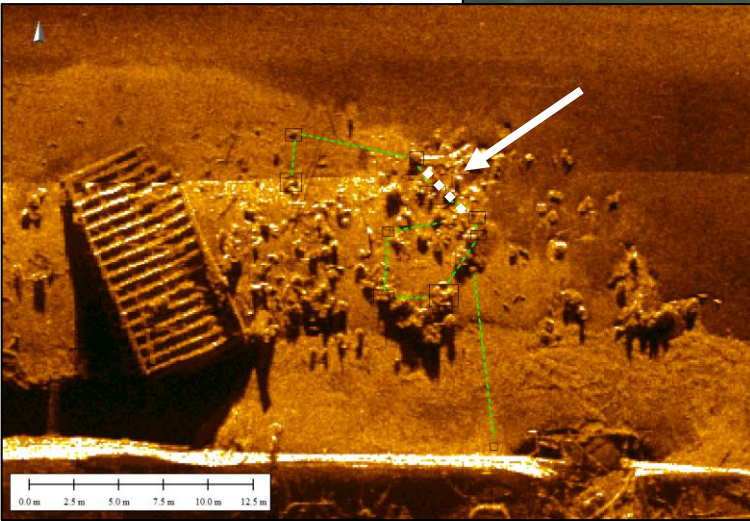


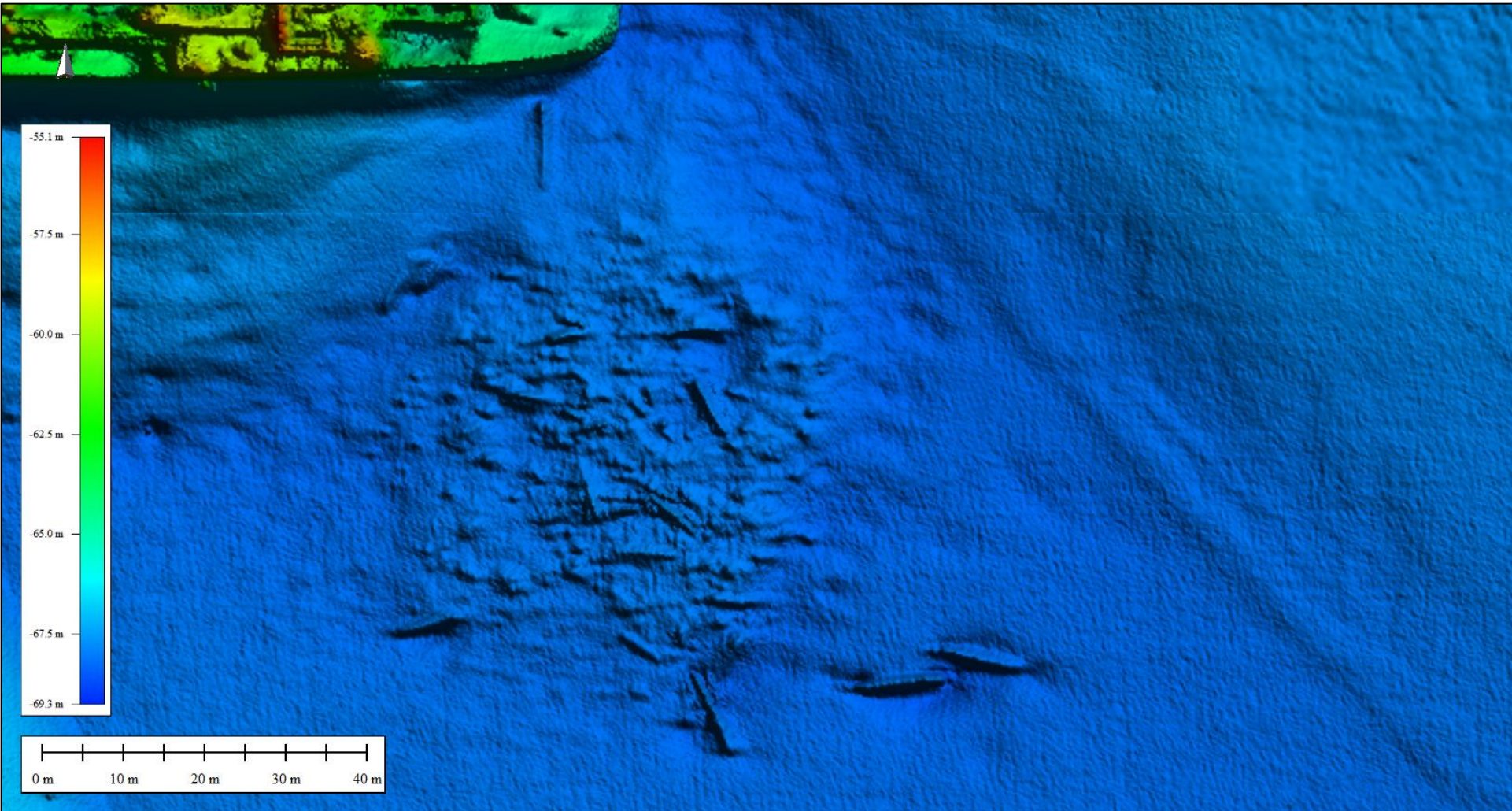


MEWO



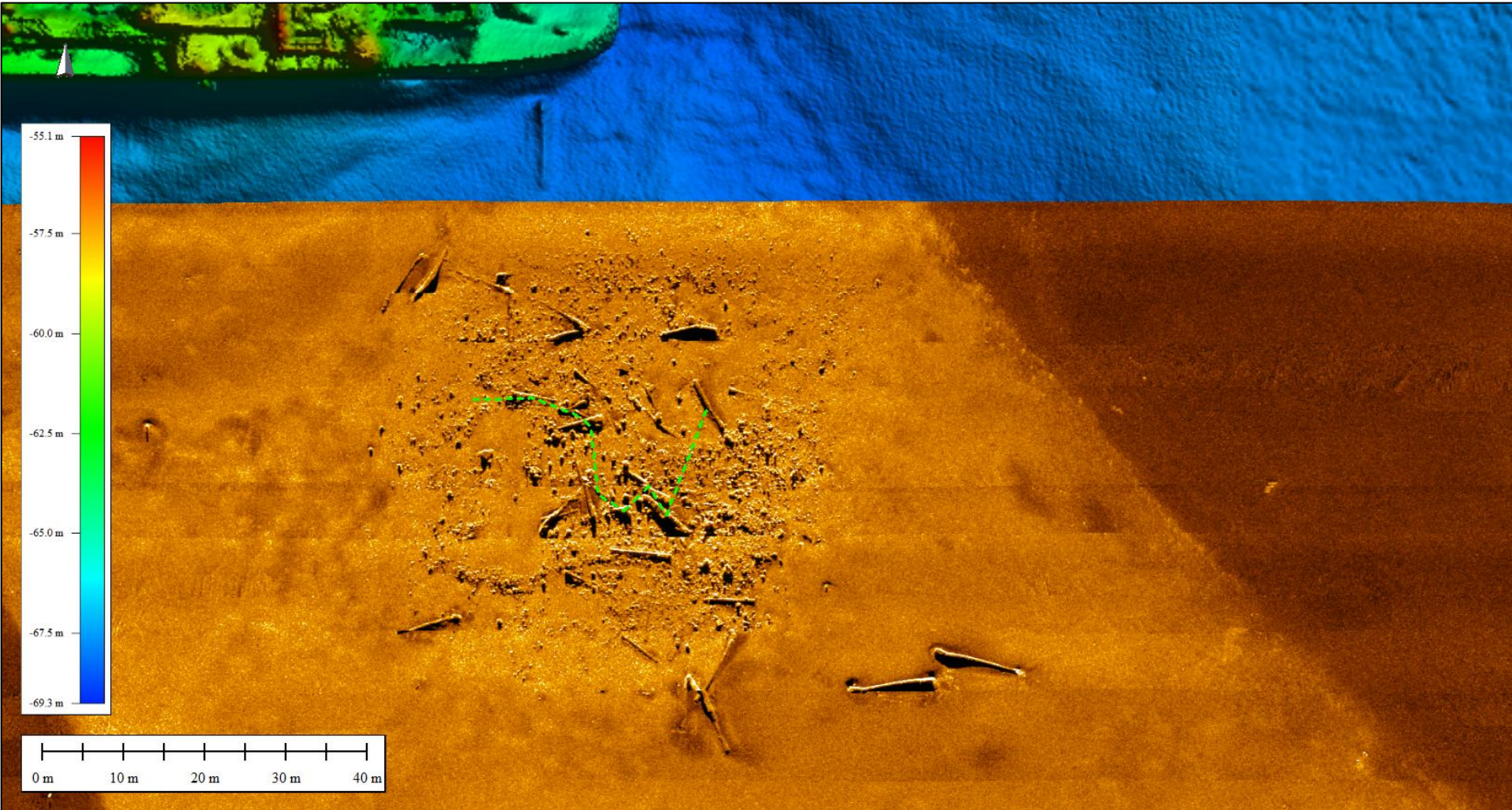
AMW

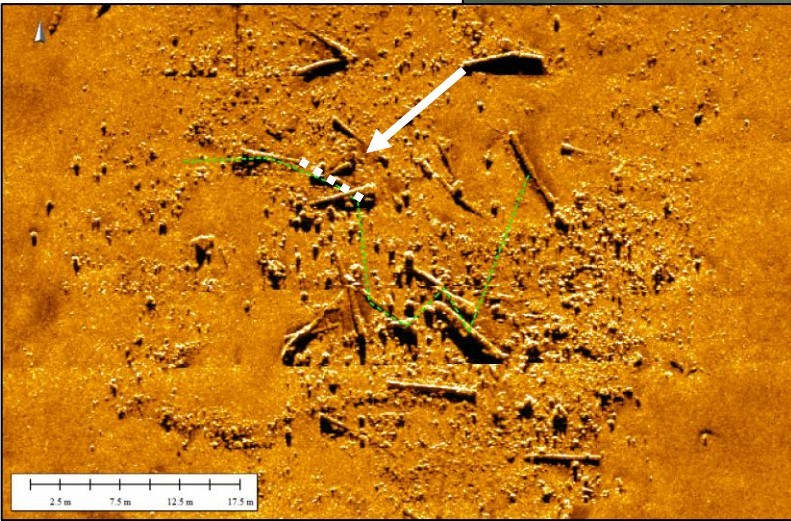
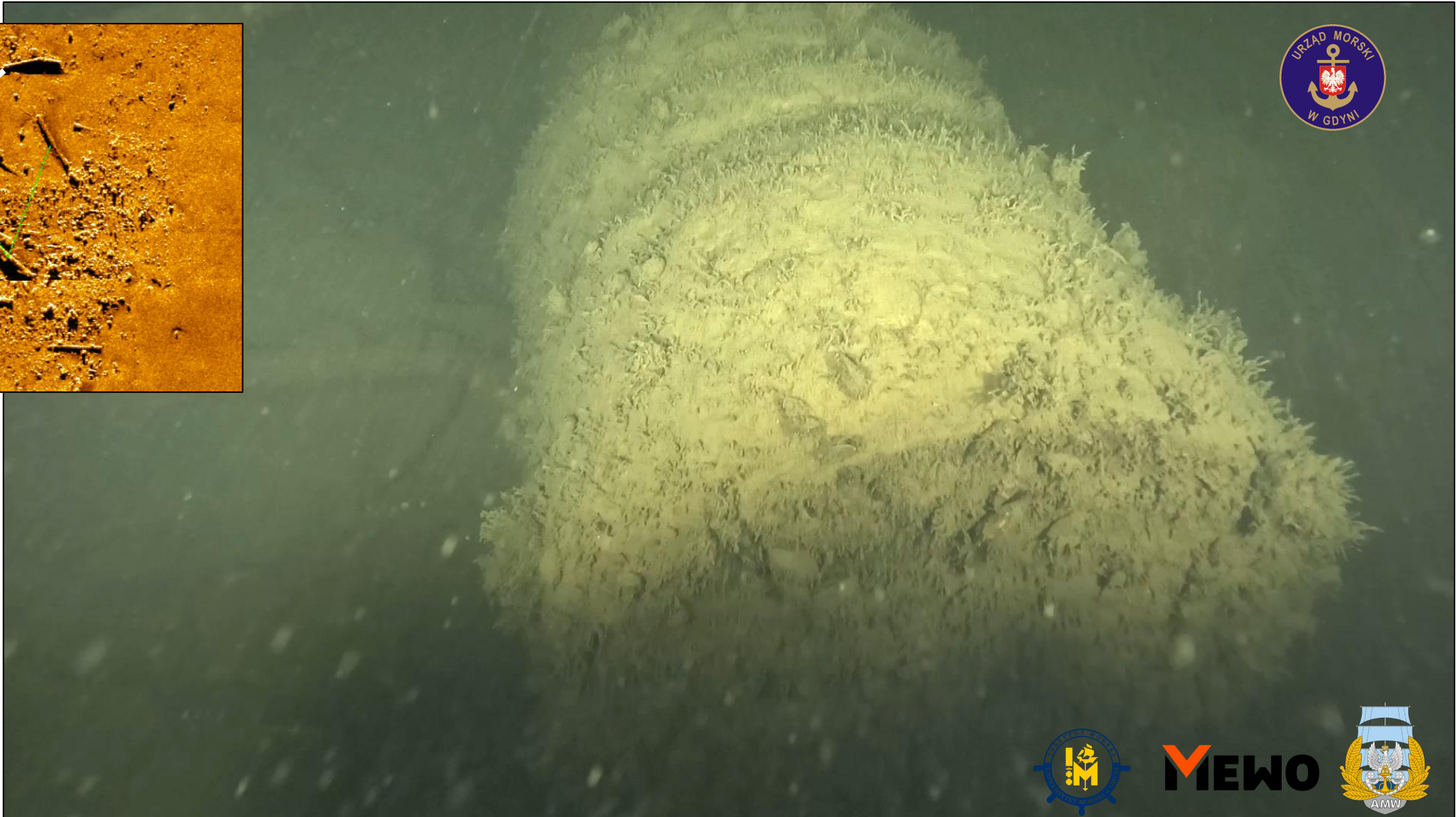


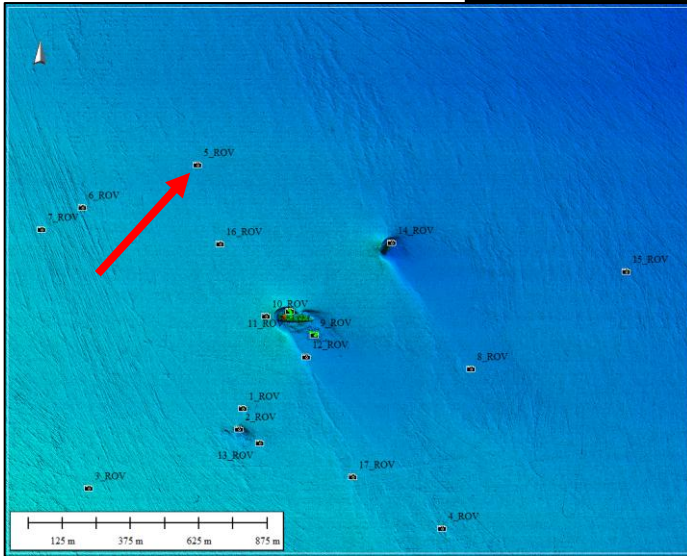


MEWO









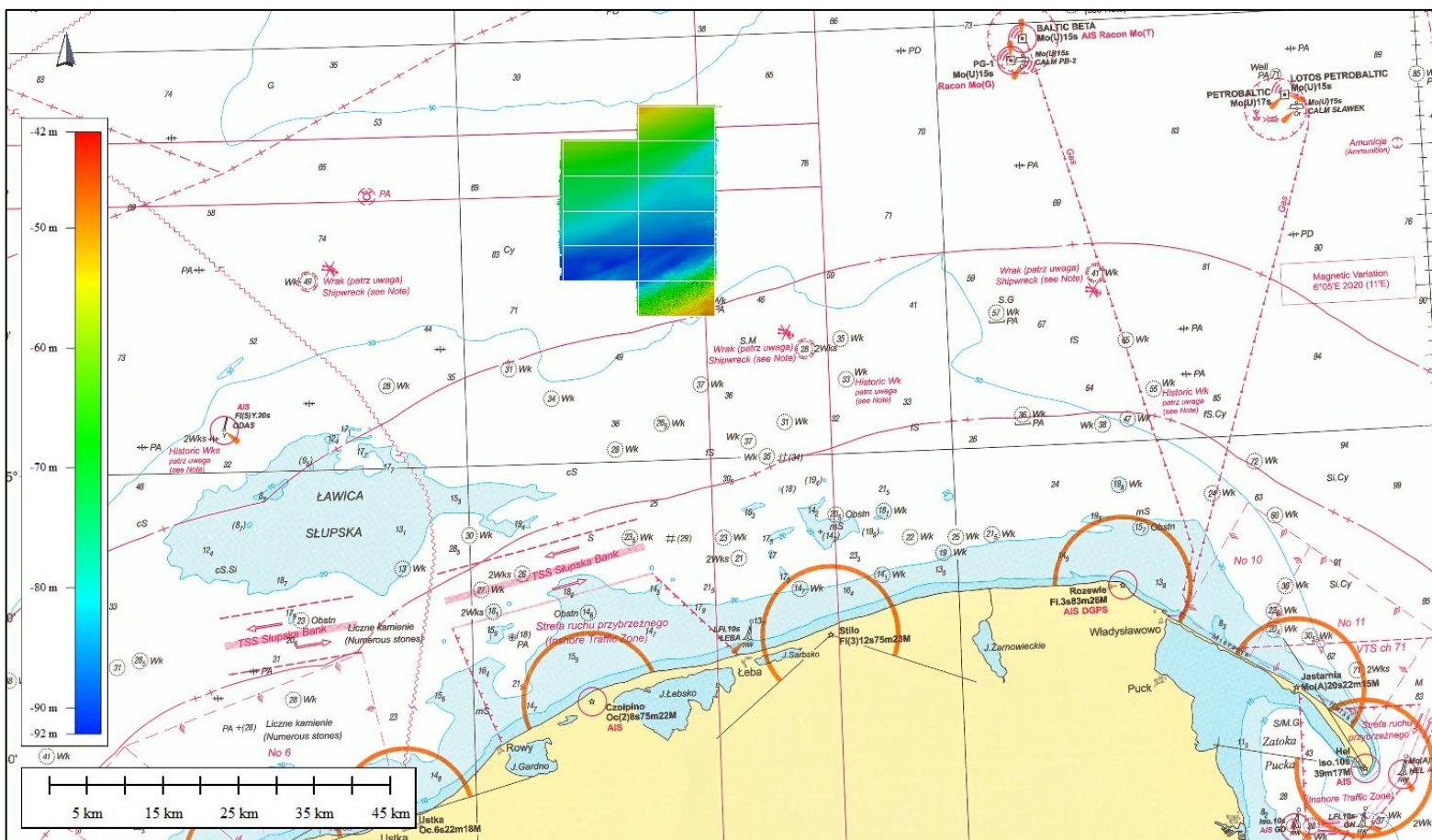
MEWO



Rynna Słupska

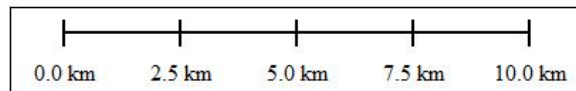
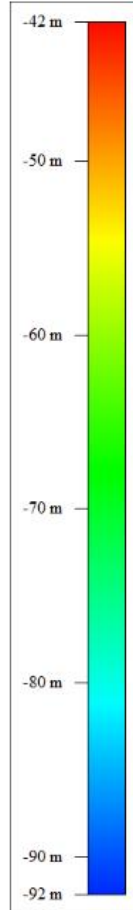


460 km²
10 arkuszy



MEWO





460 km²
10 arkuszy
głębokość 48-92 m p.p.m.

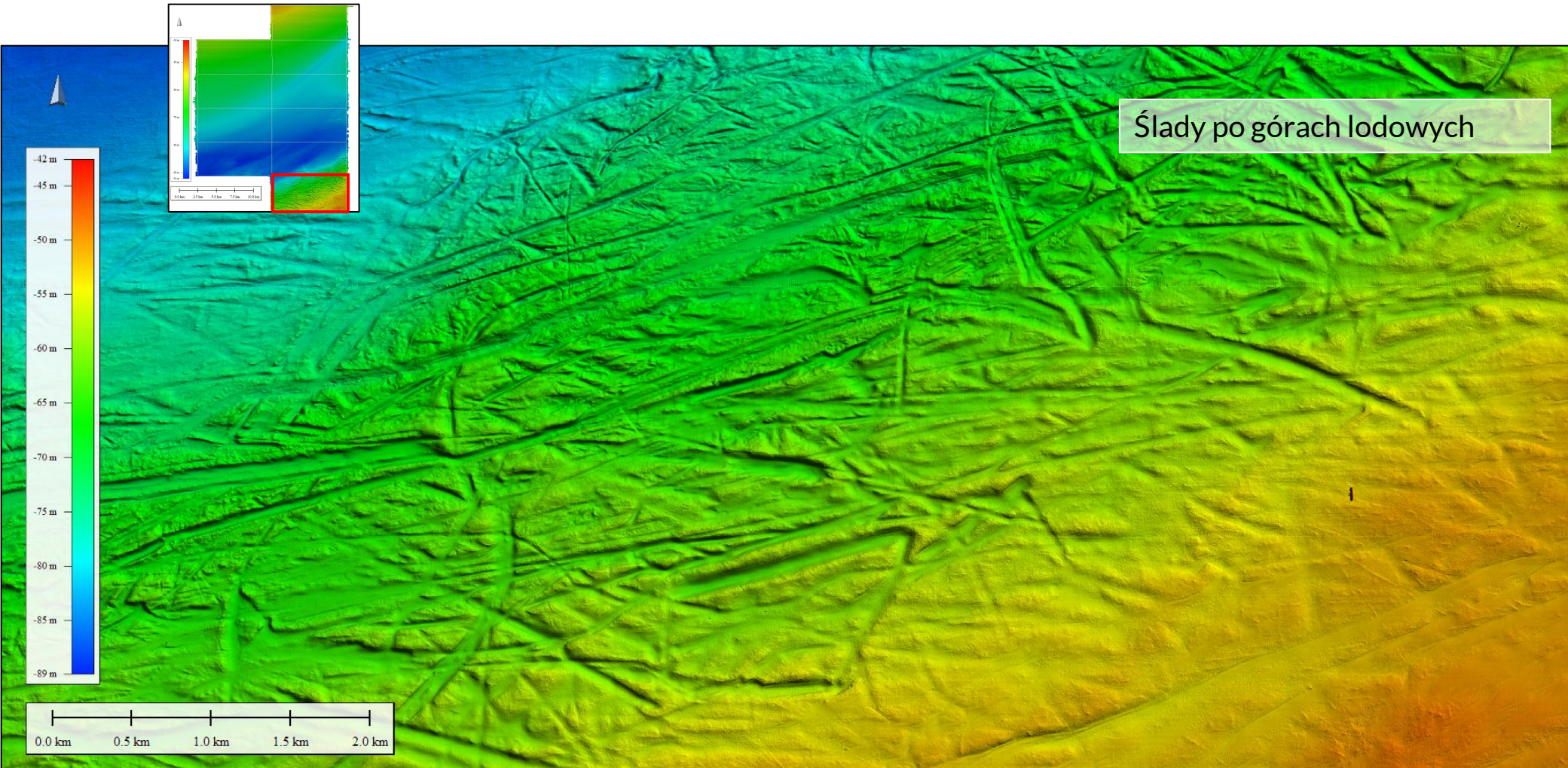


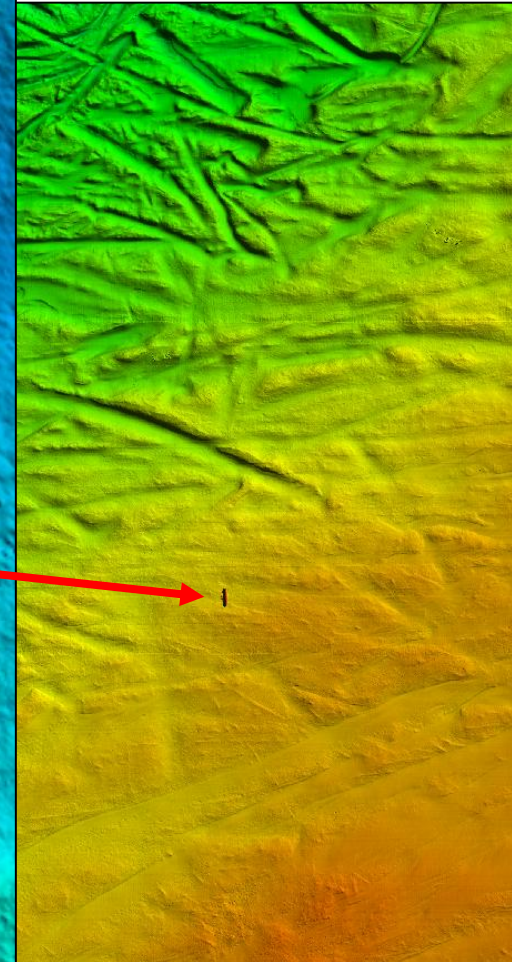
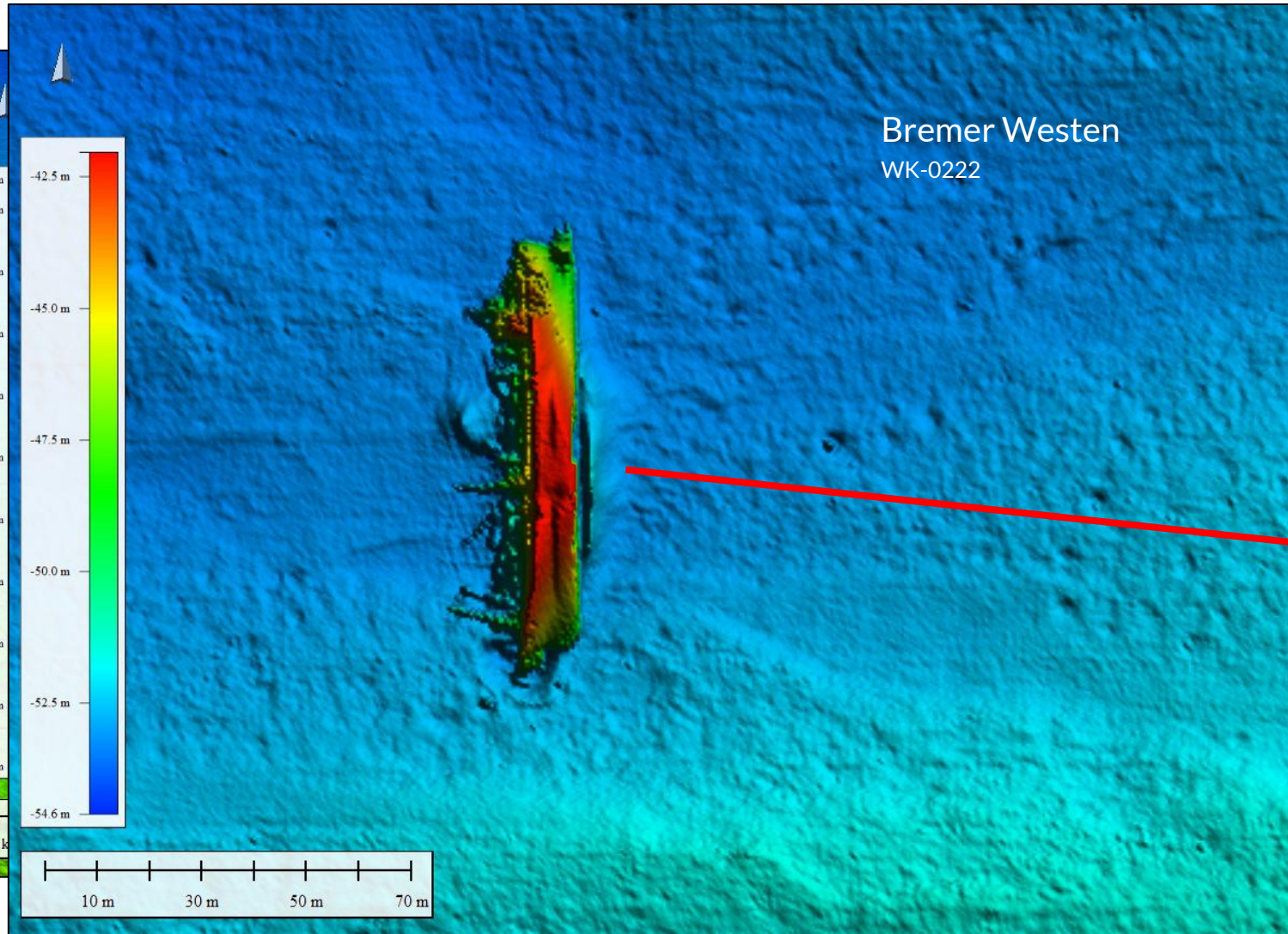
MEWO





Ślady po górach lodowych



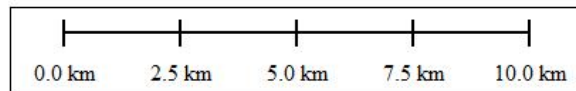
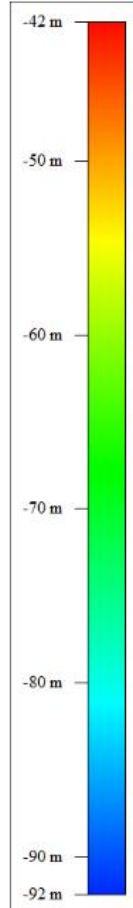


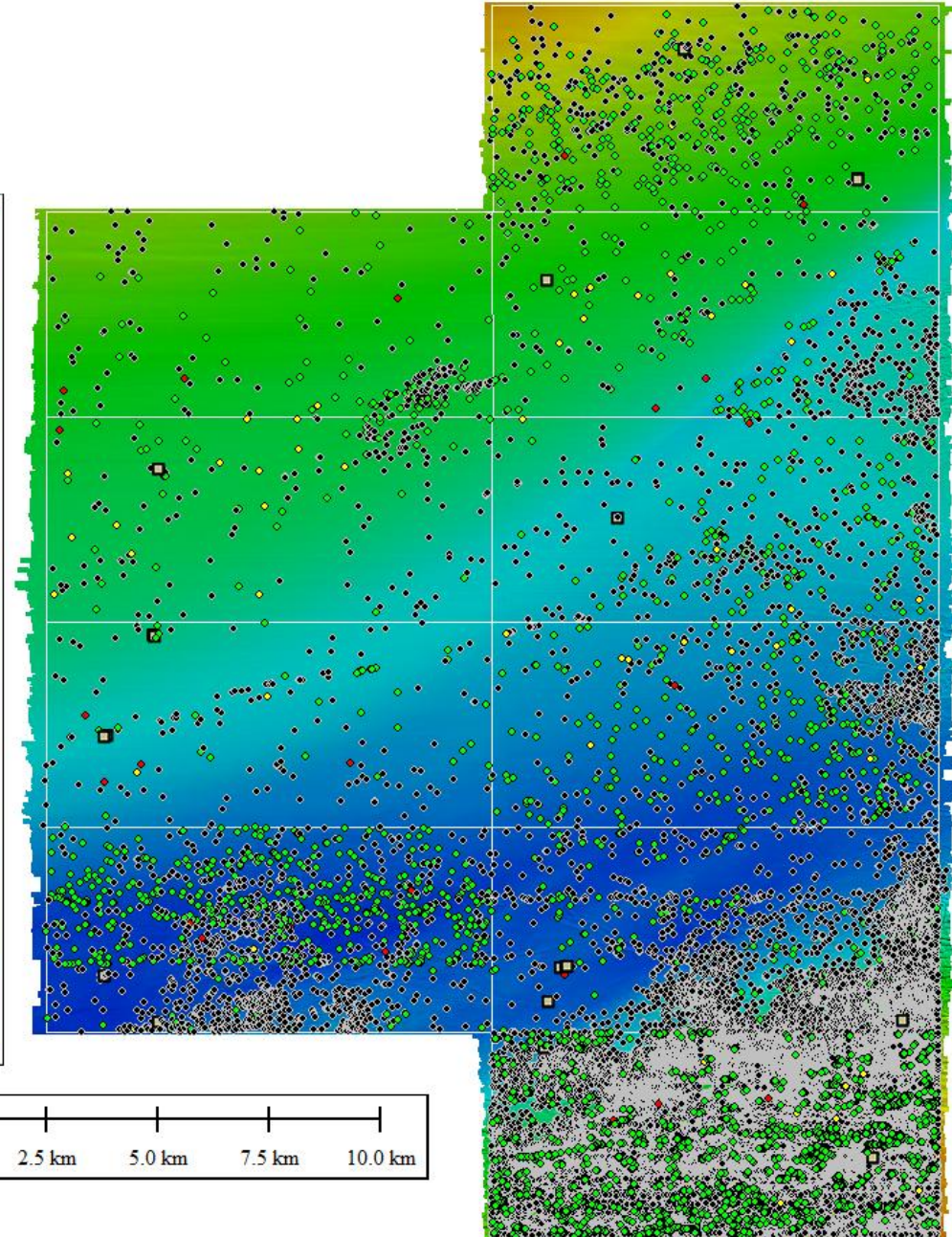
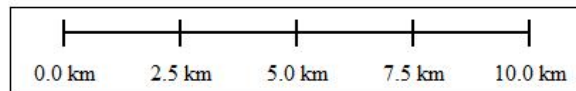
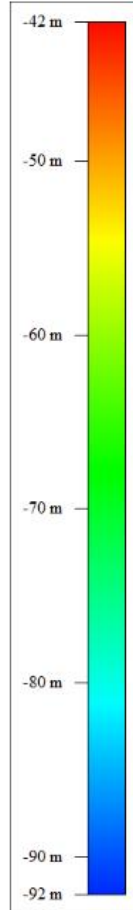


Obszary o widocznej większej szorstkości dna wynikającej z obecności i migracji płytko zalegającego gazu w osadach mulistych i mulisto-piaszczystych



MEWO





Wskazano 78388 obiektów

27	pUXO
12	wraków
8	skupisk szczątków
5861	lokalizacji potencjalnych zrzutów
55	miejsc zalegania lin, sieci
72425	obiekty niezidentyfikowane



MEWO

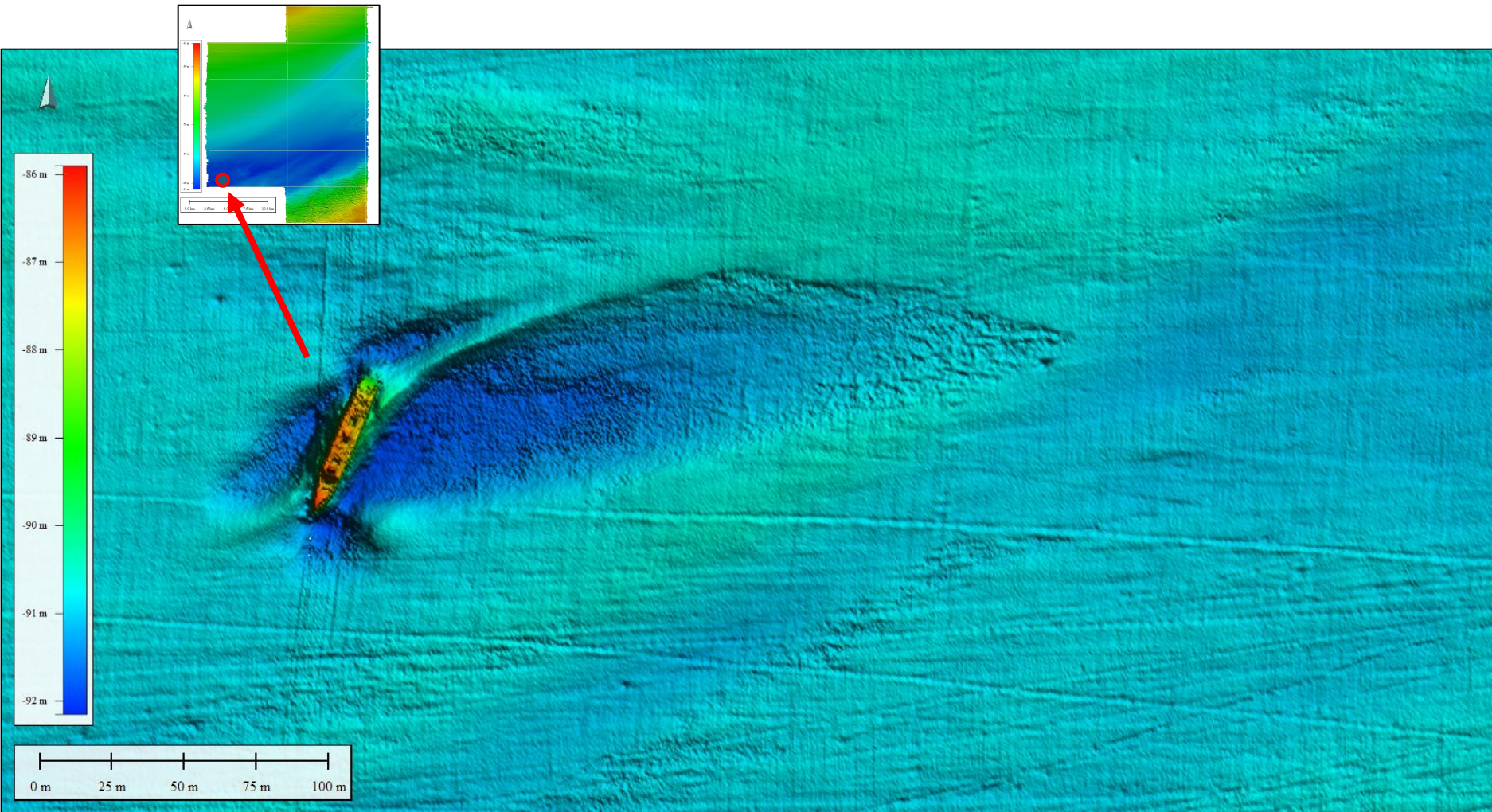




wrak WK-0647
(RS09_1_SSS_0030)



MEWO

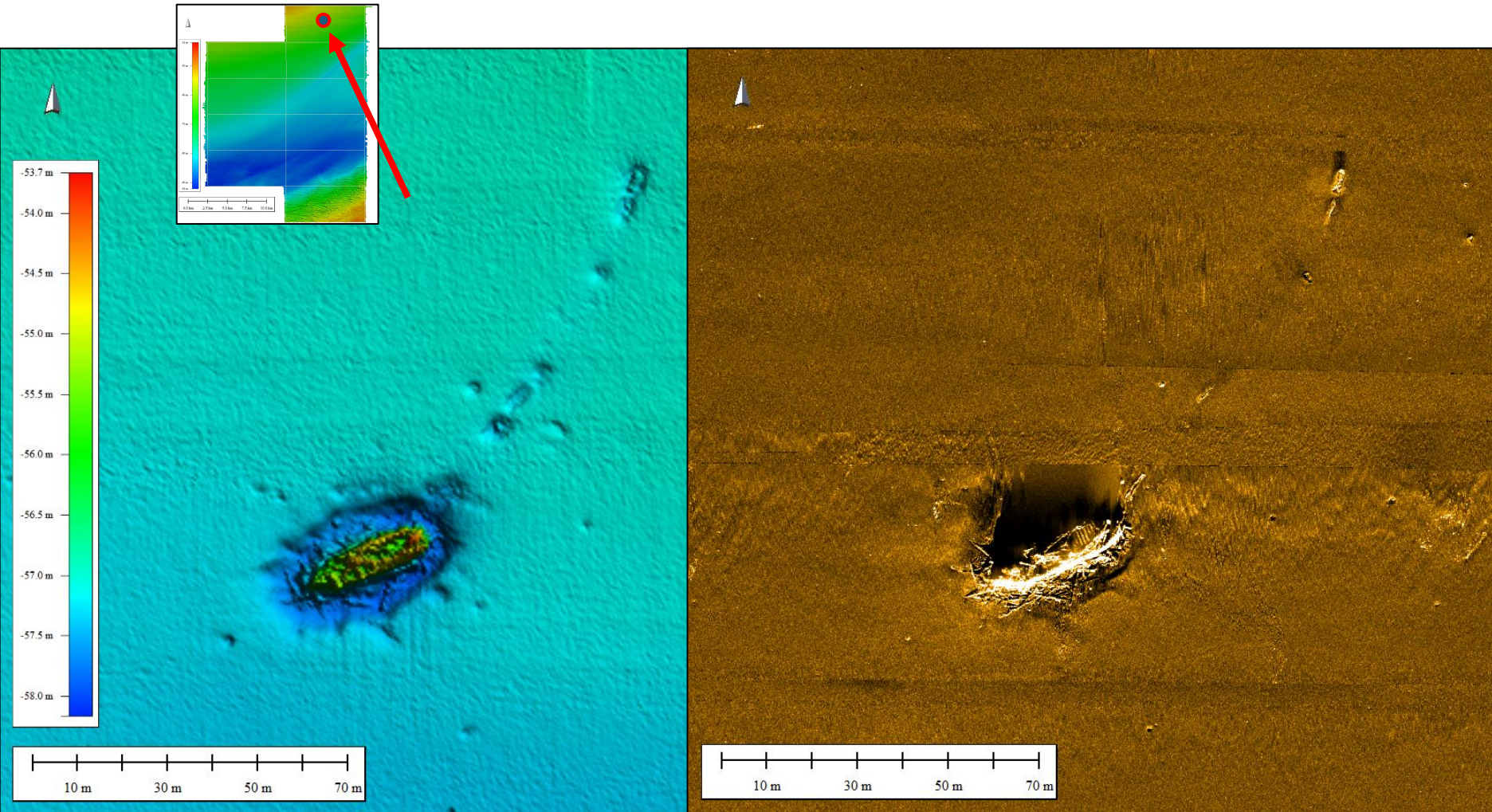




wrak
(RS05_3_SSS_0021)

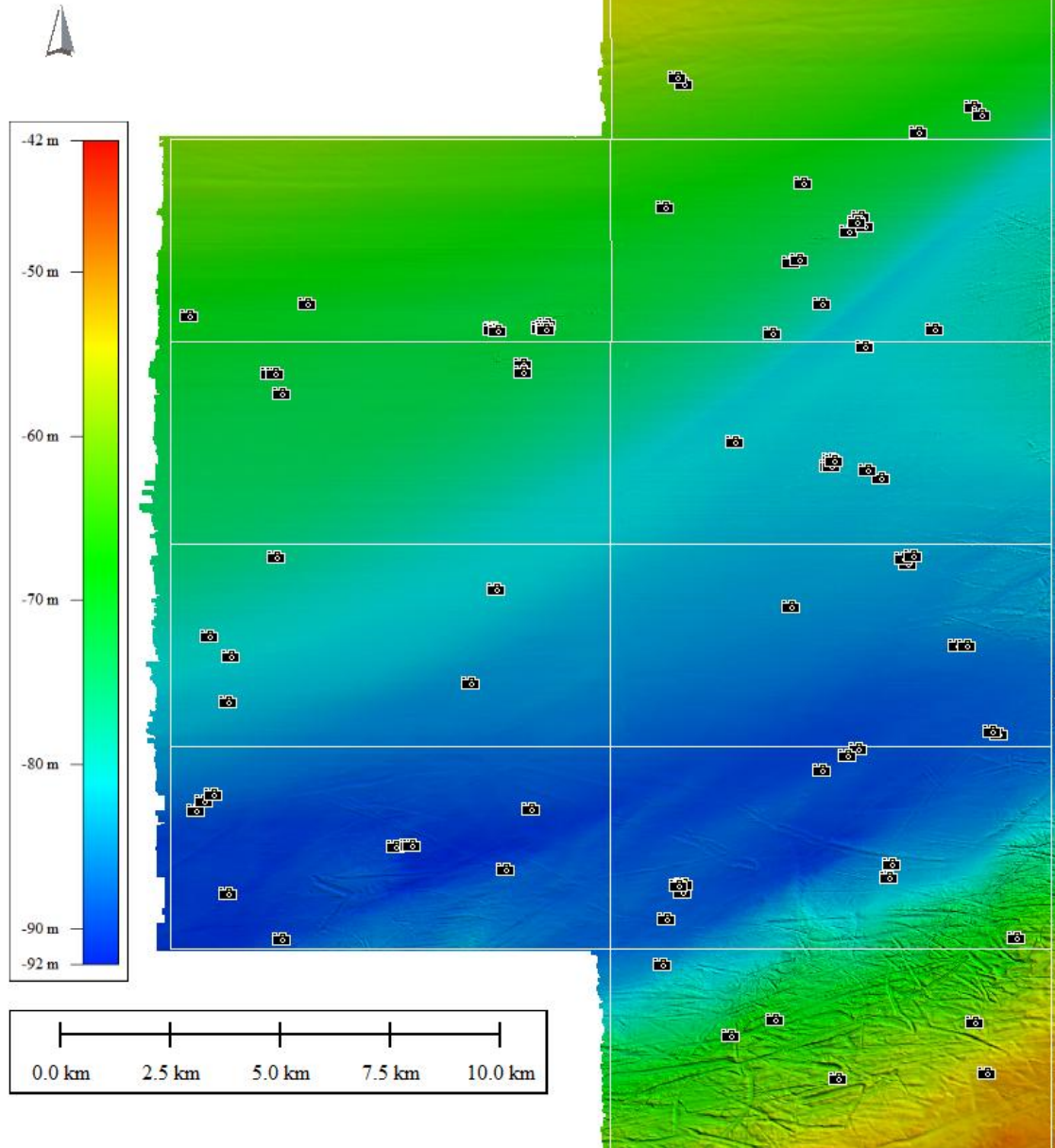


MEWO





67 punktów inspekcji ROV



MEWO





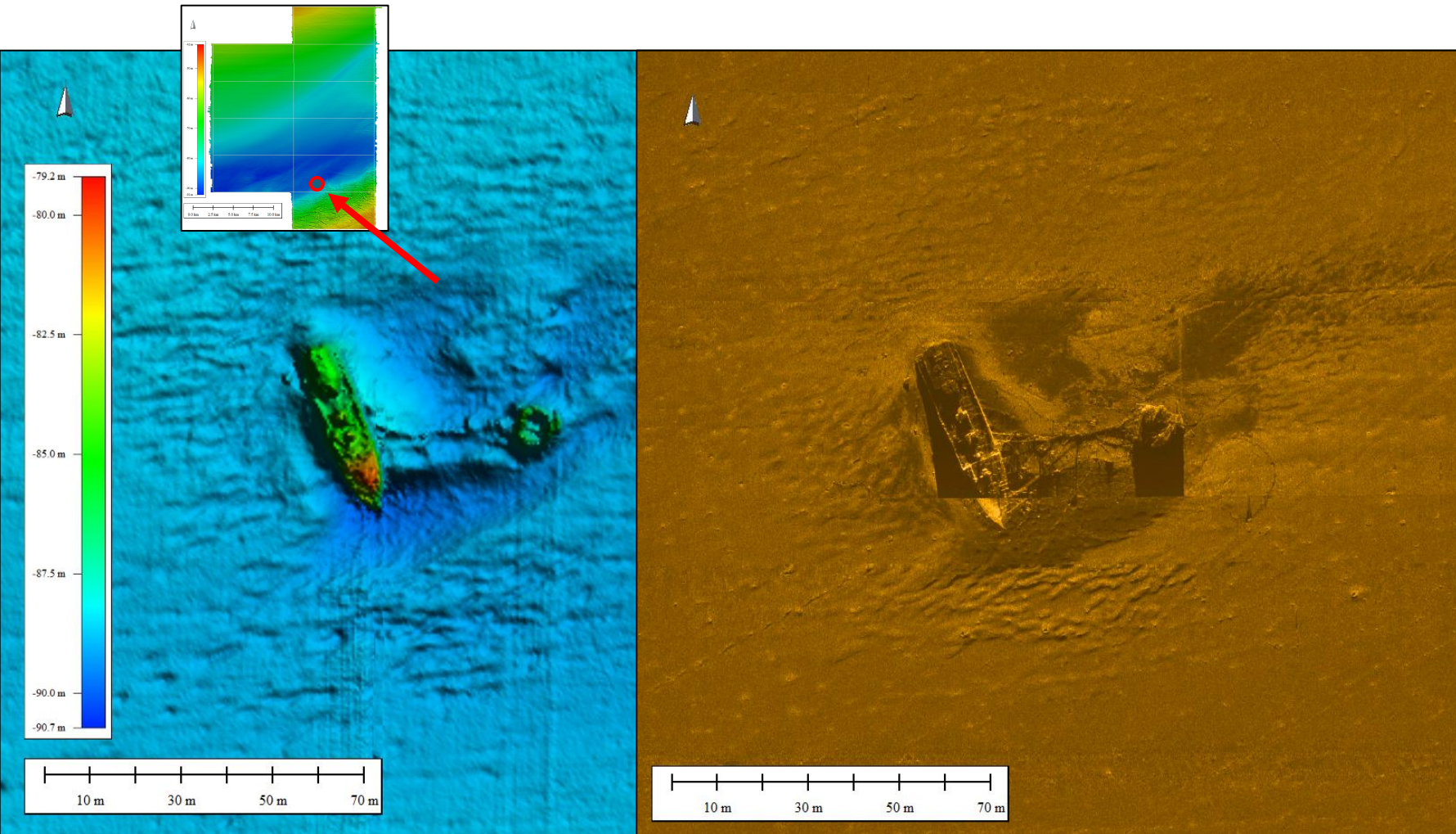
wrak WK-0645
(RS04_1_SSS_0006)

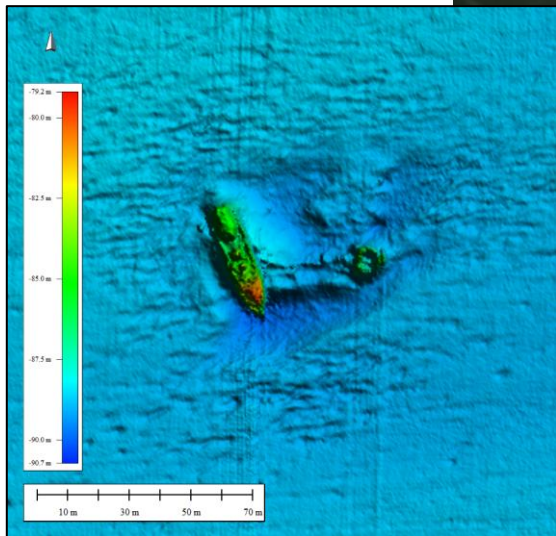
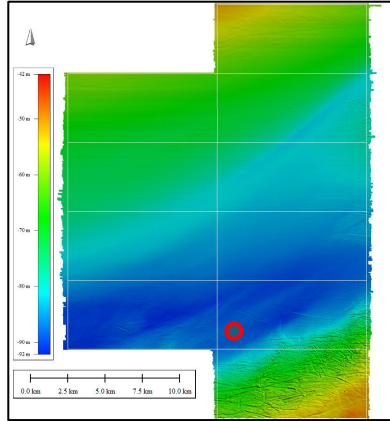


MEWO



AMW



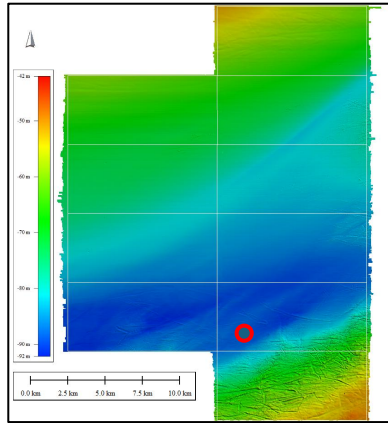


wrak WK-0645
(RS04_1_SSS_0006)



MEWO



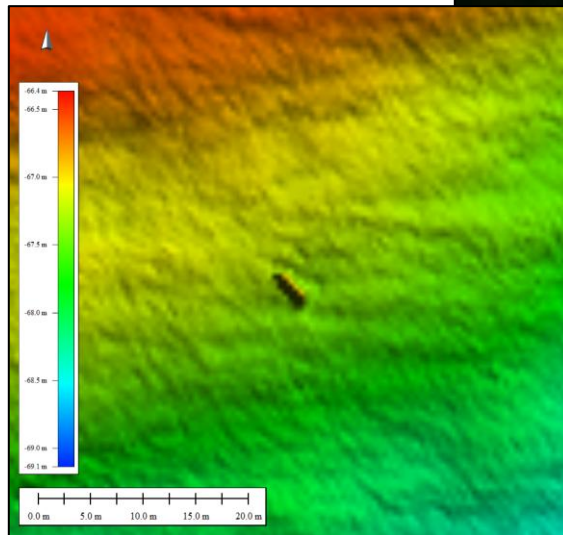
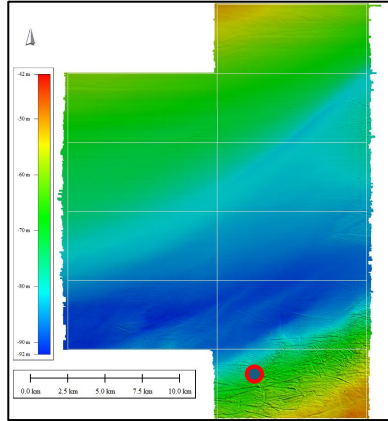


Szczątki
(RS04_1_SSS_0004)



MEWO





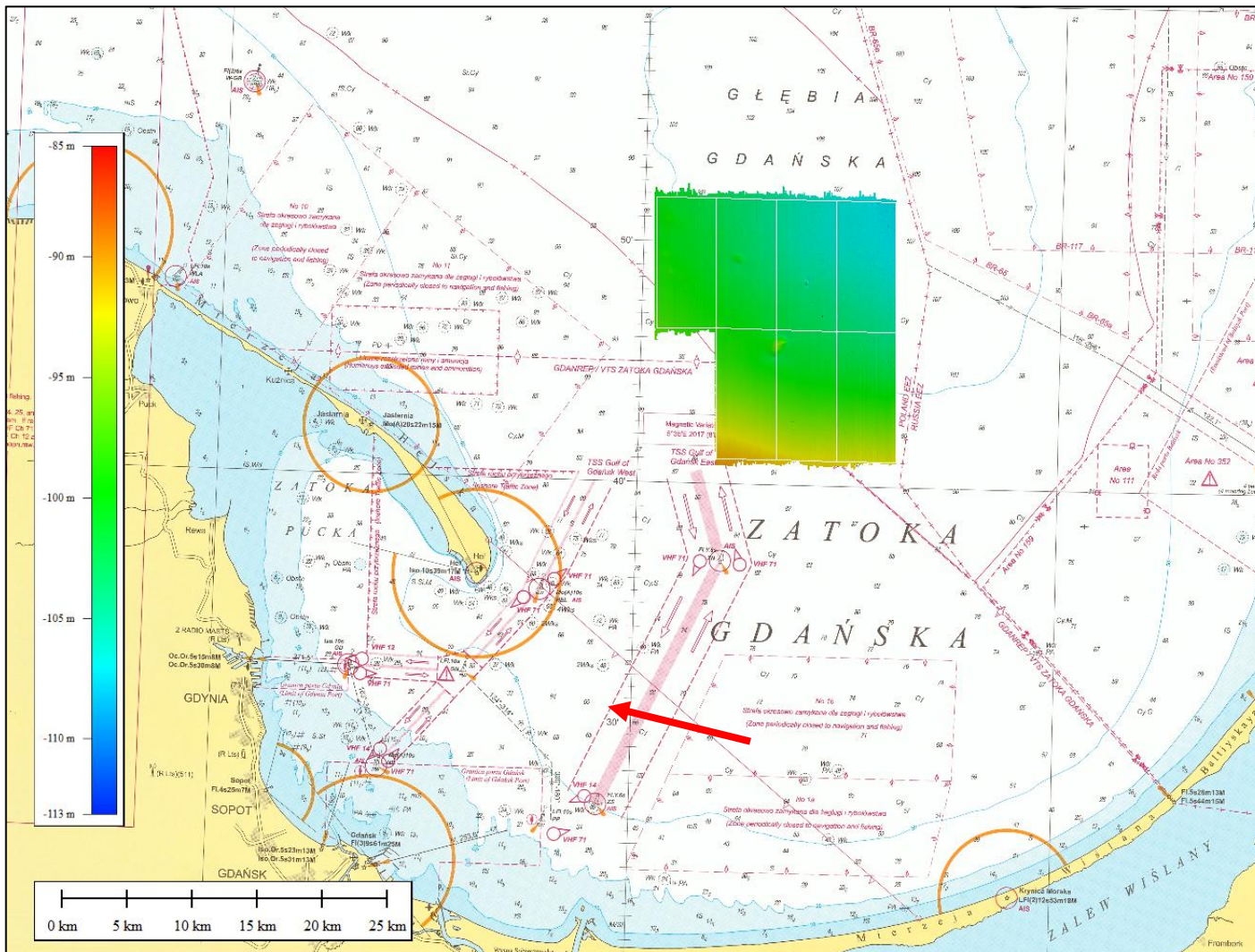
pUXO
(RS06_2_SSS_0001)



Głębia Gdańska

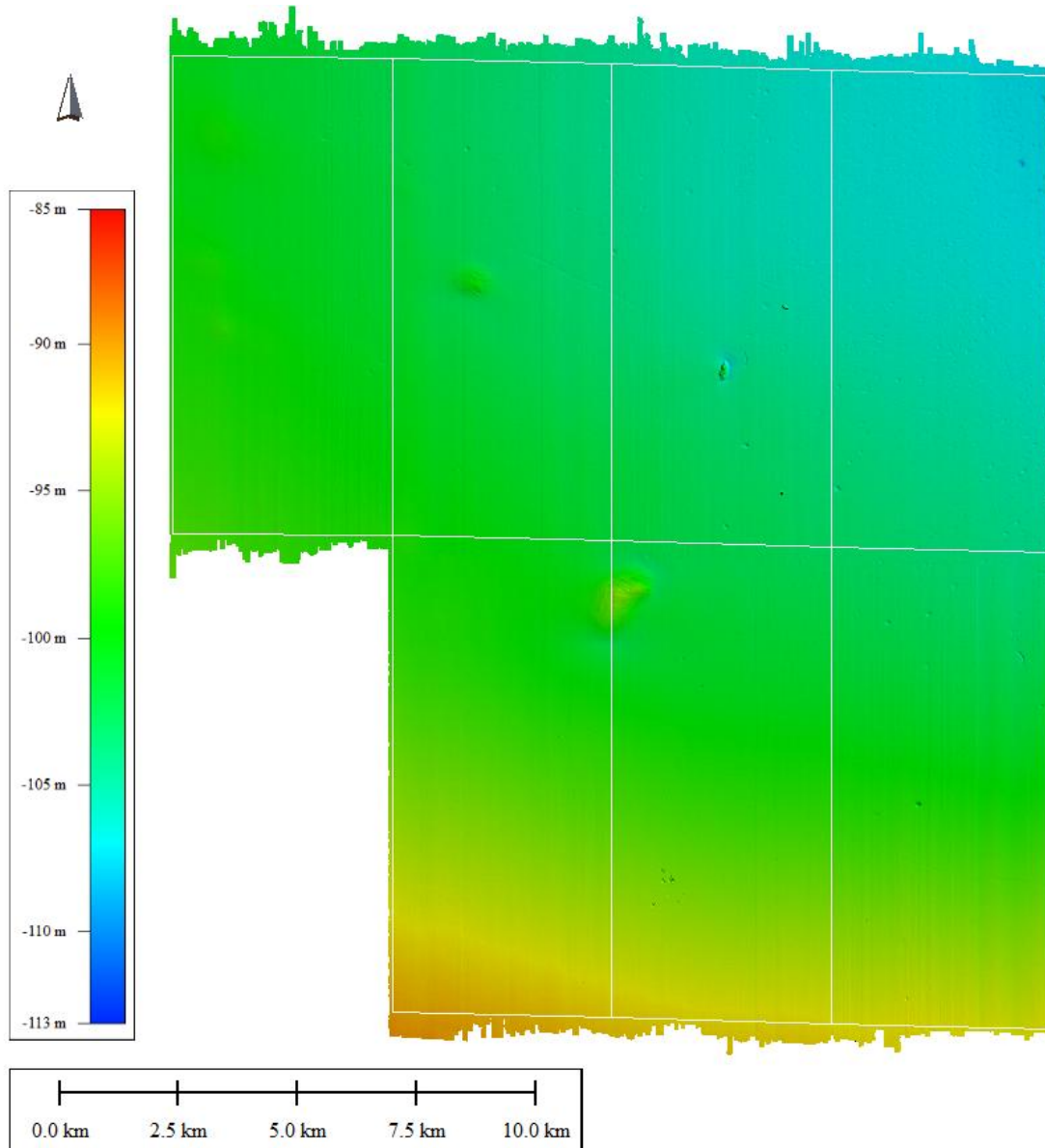


7 arkuszy, łączna powierzchnia 322 km²



MEWO





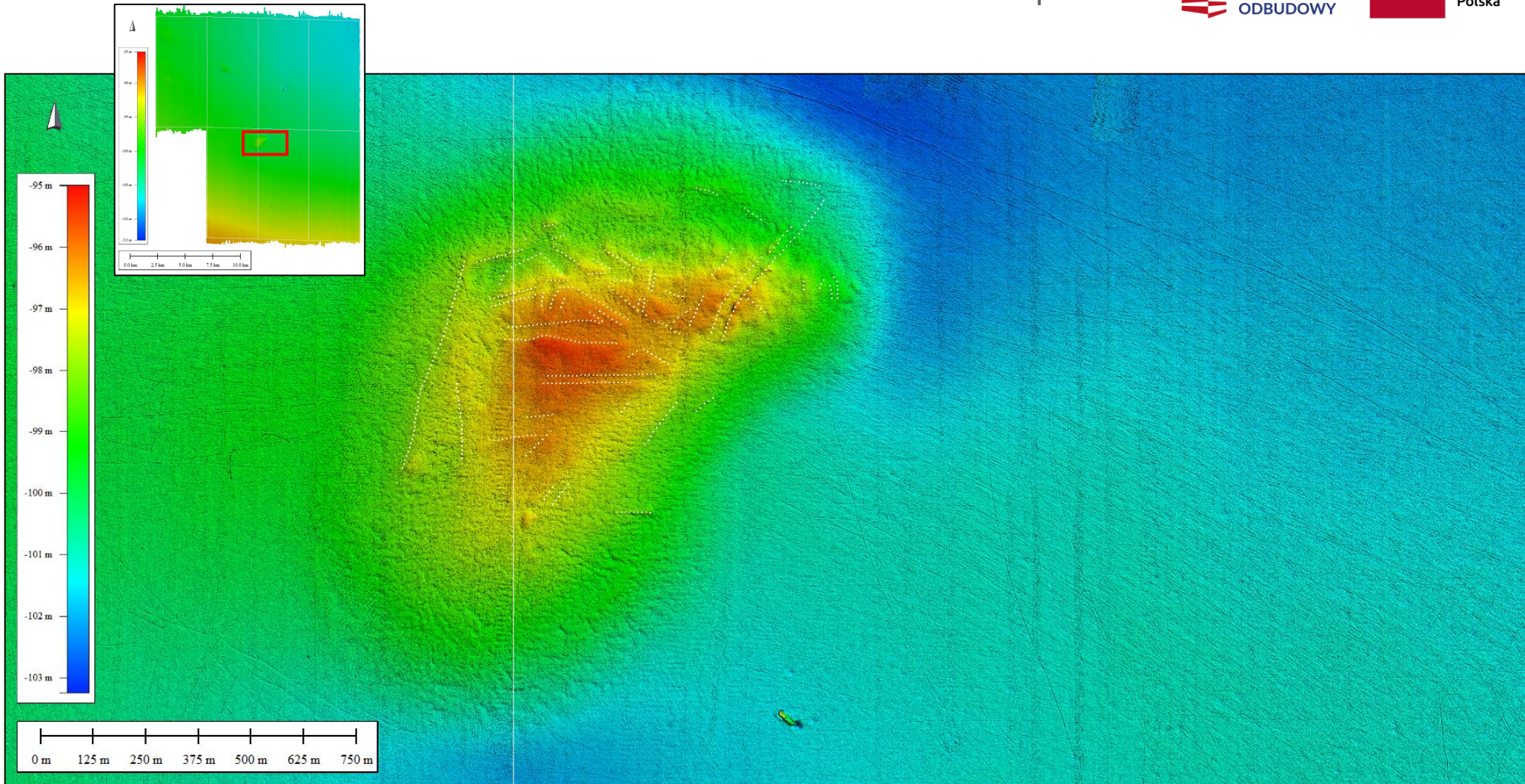
7 arkuszy, łączna powierzchnia 322 km²

Głębokość 85 – 113 m p.p.m.



MEWO



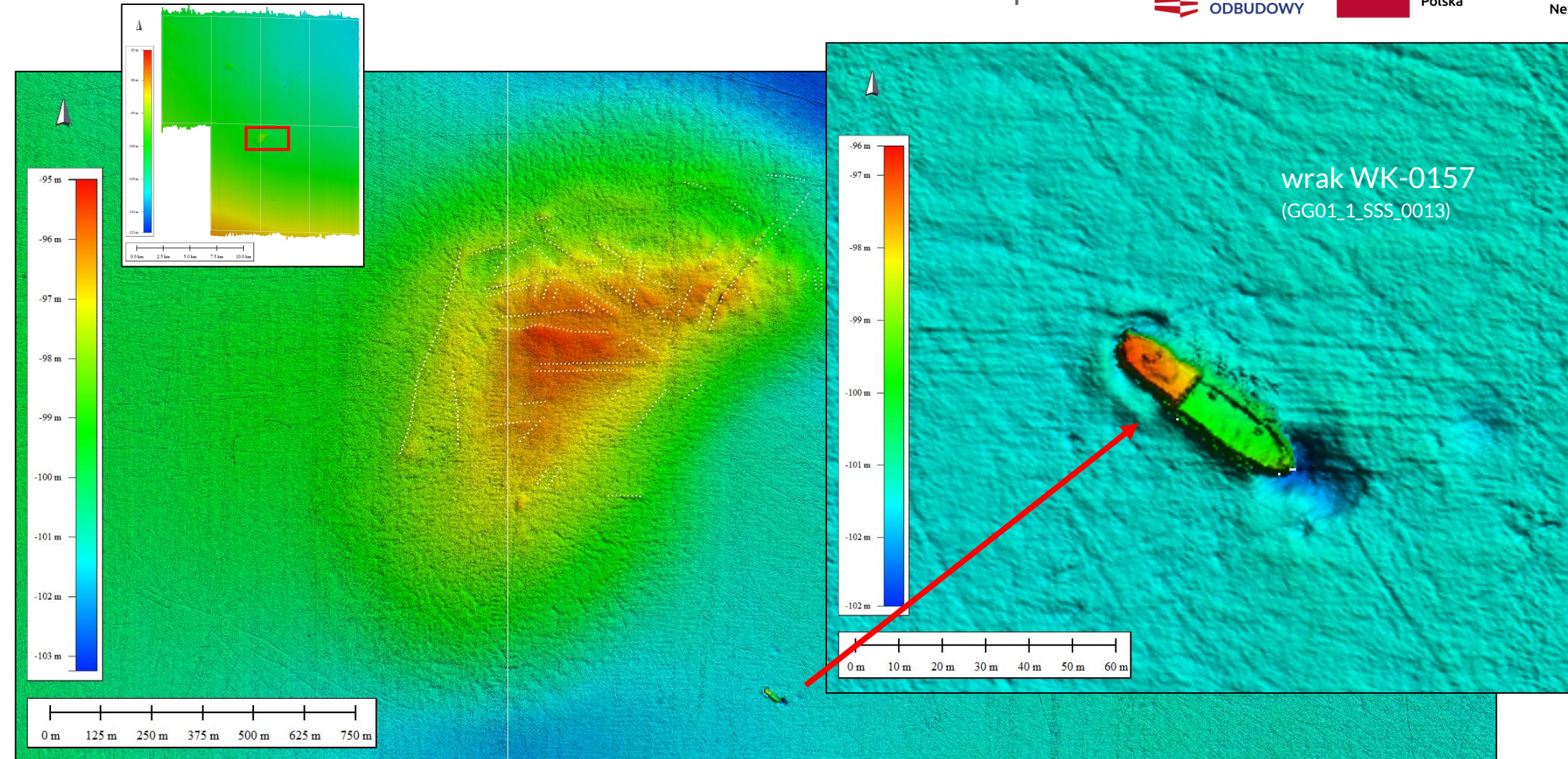




wrak WK-0157
(GG01_1_SSS_0013)

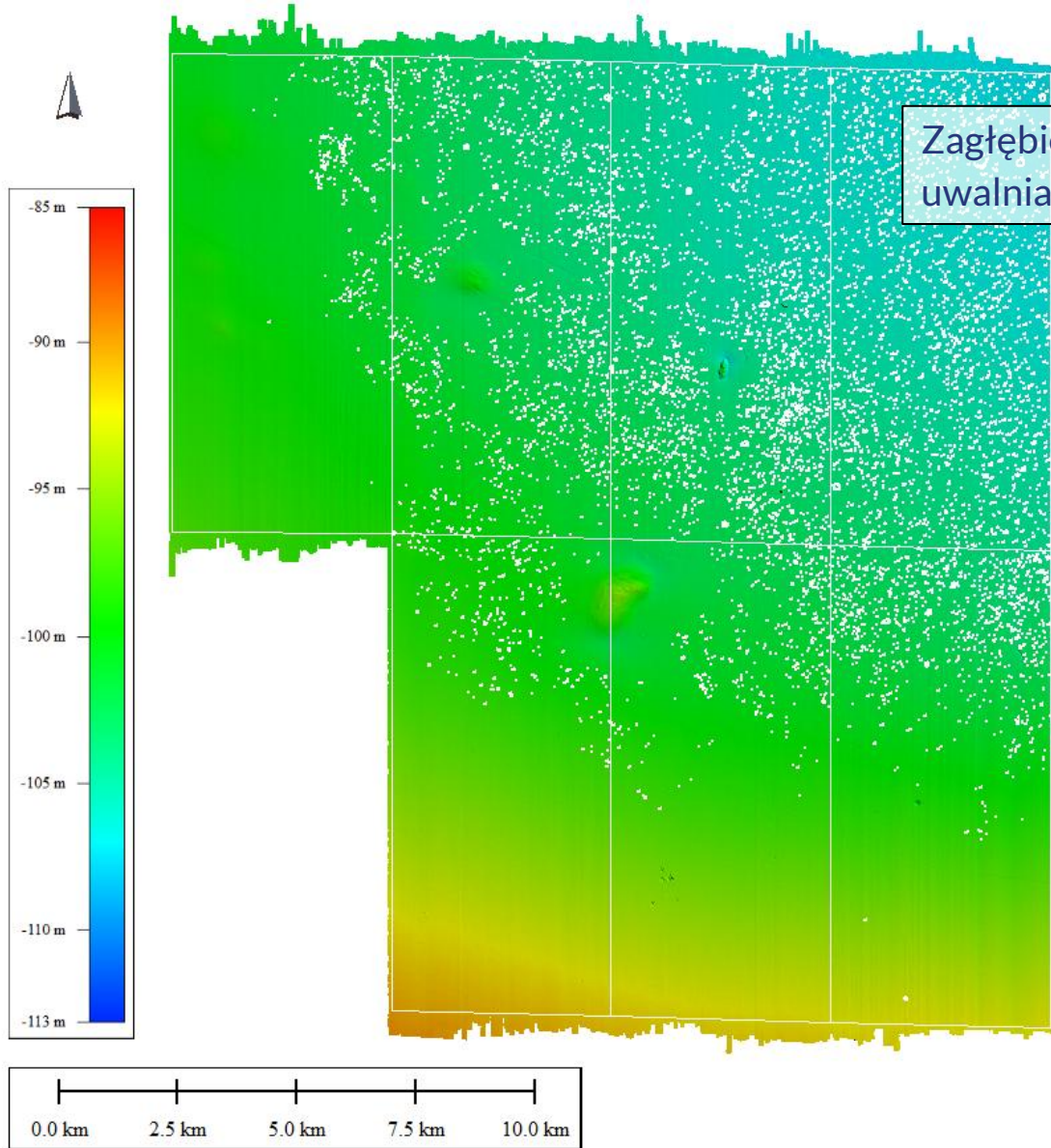


MEWO





Zagłębienia (pockmarki) powstałe w wyniku
uwalniania gazu z osadów mulistych budujących dno

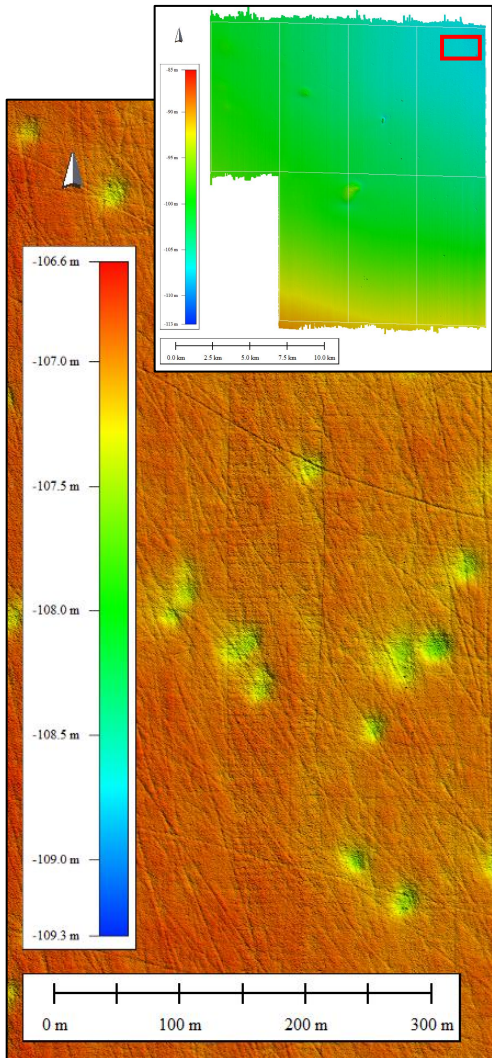


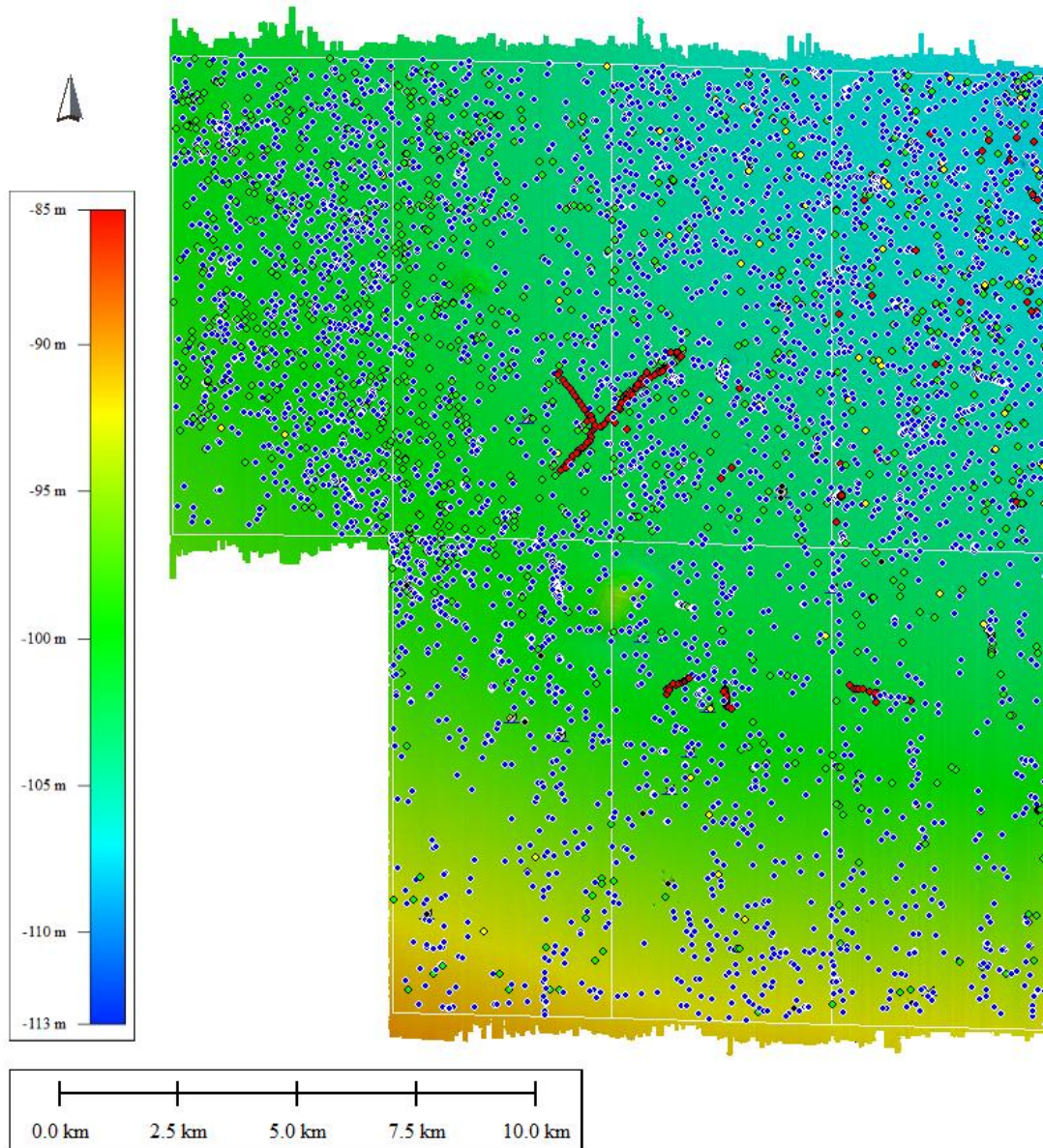
MEWO





Zagłębienia (pockmarki) powstałe w wyniku uwalniania gazu z osadów mulistych budujących dno





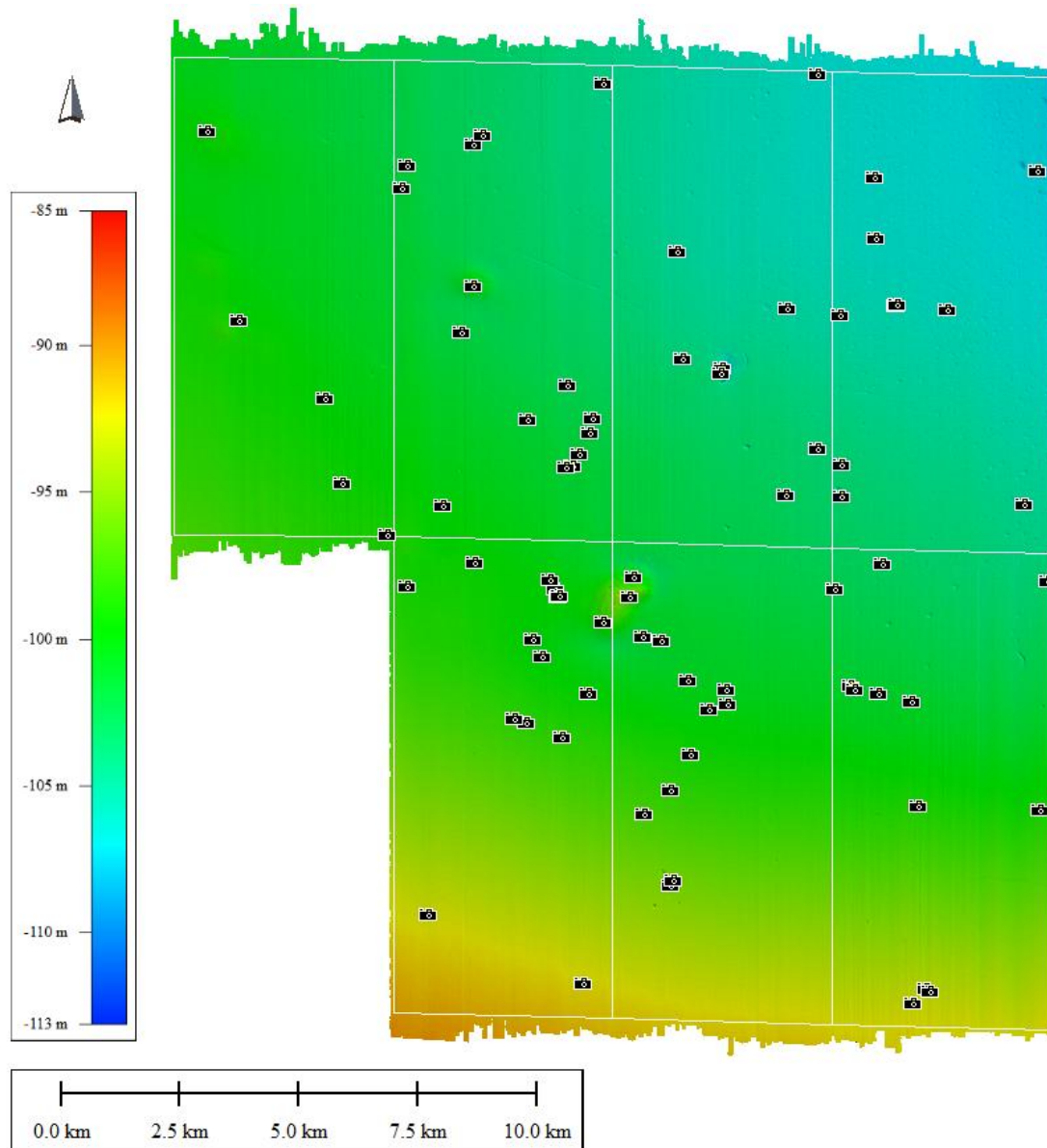
Wskazano 5512 obiektów

192	pUXO
15	wraków
50	skupisk szczątków
966	lokalizacji potencjalnych zrzutów
72	miejsca zalegania lin, sieci
4217	obiektów niezidentyfikowanych



MEWO



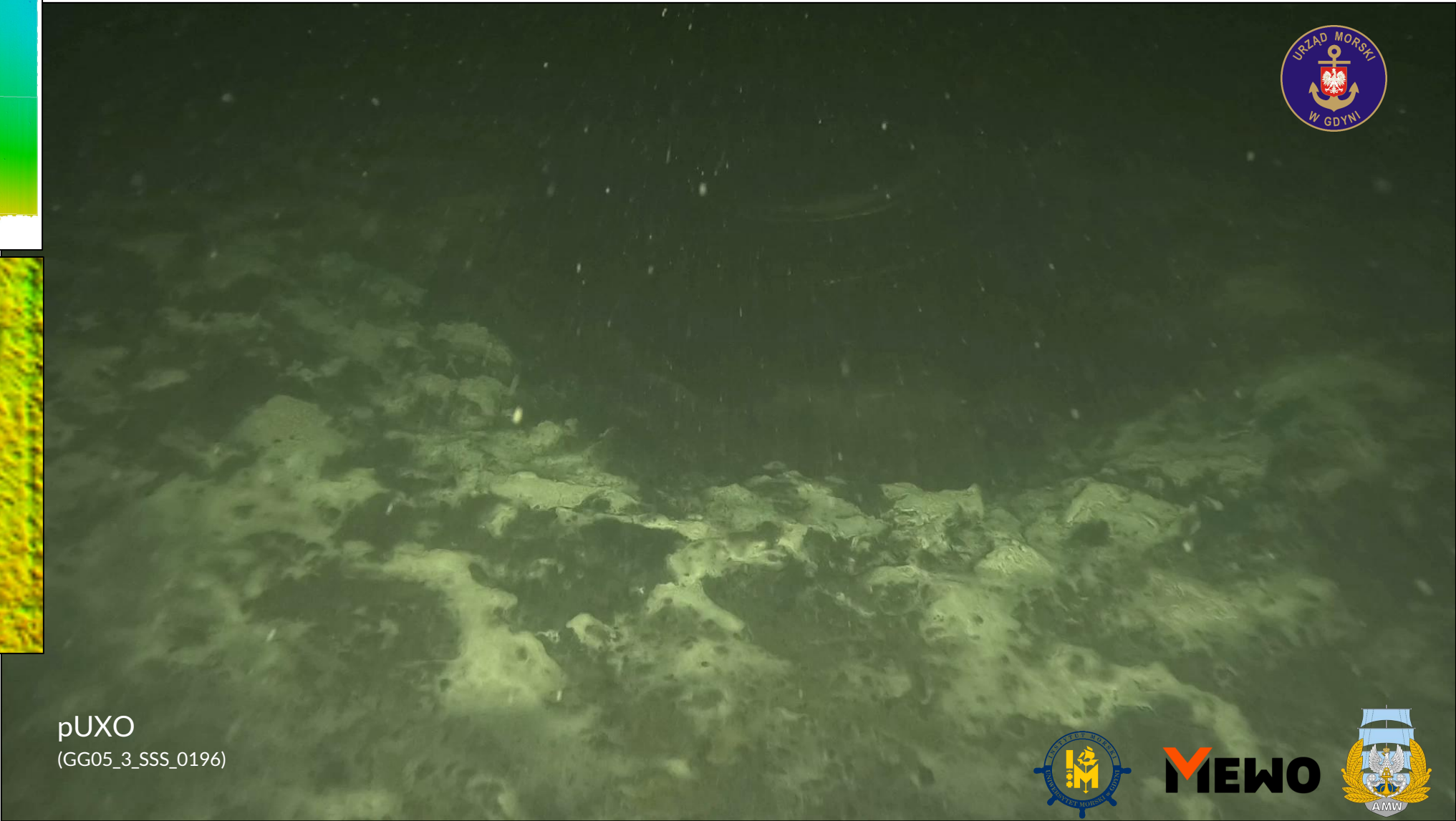
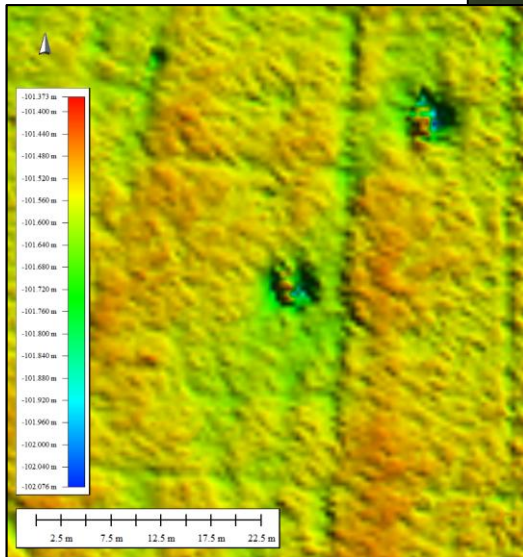
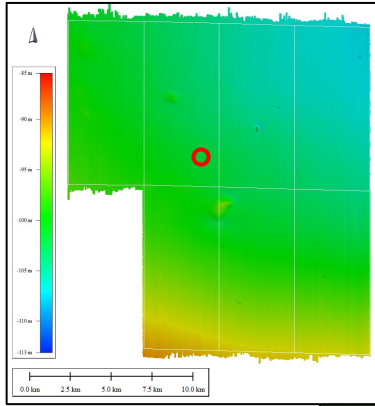


78 punktów inspekcji ROV



MEWO



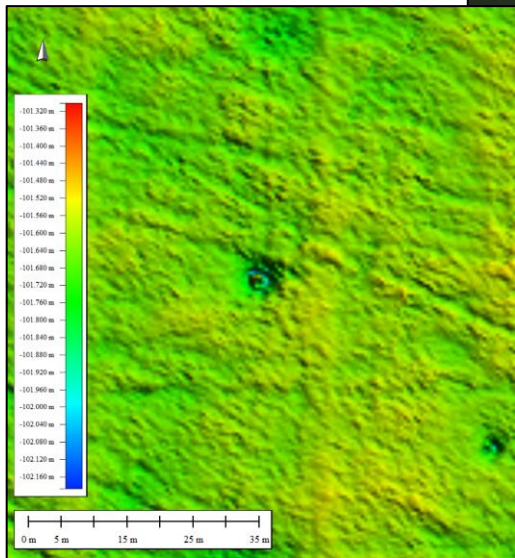
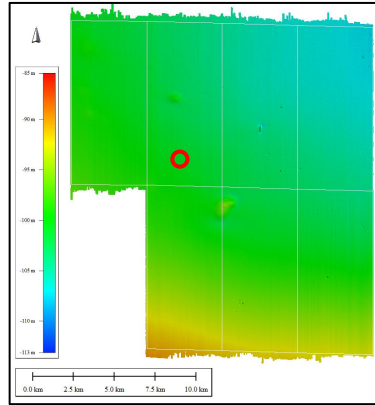


pUXO
(GG05_3_SSS_0196)



MEWO



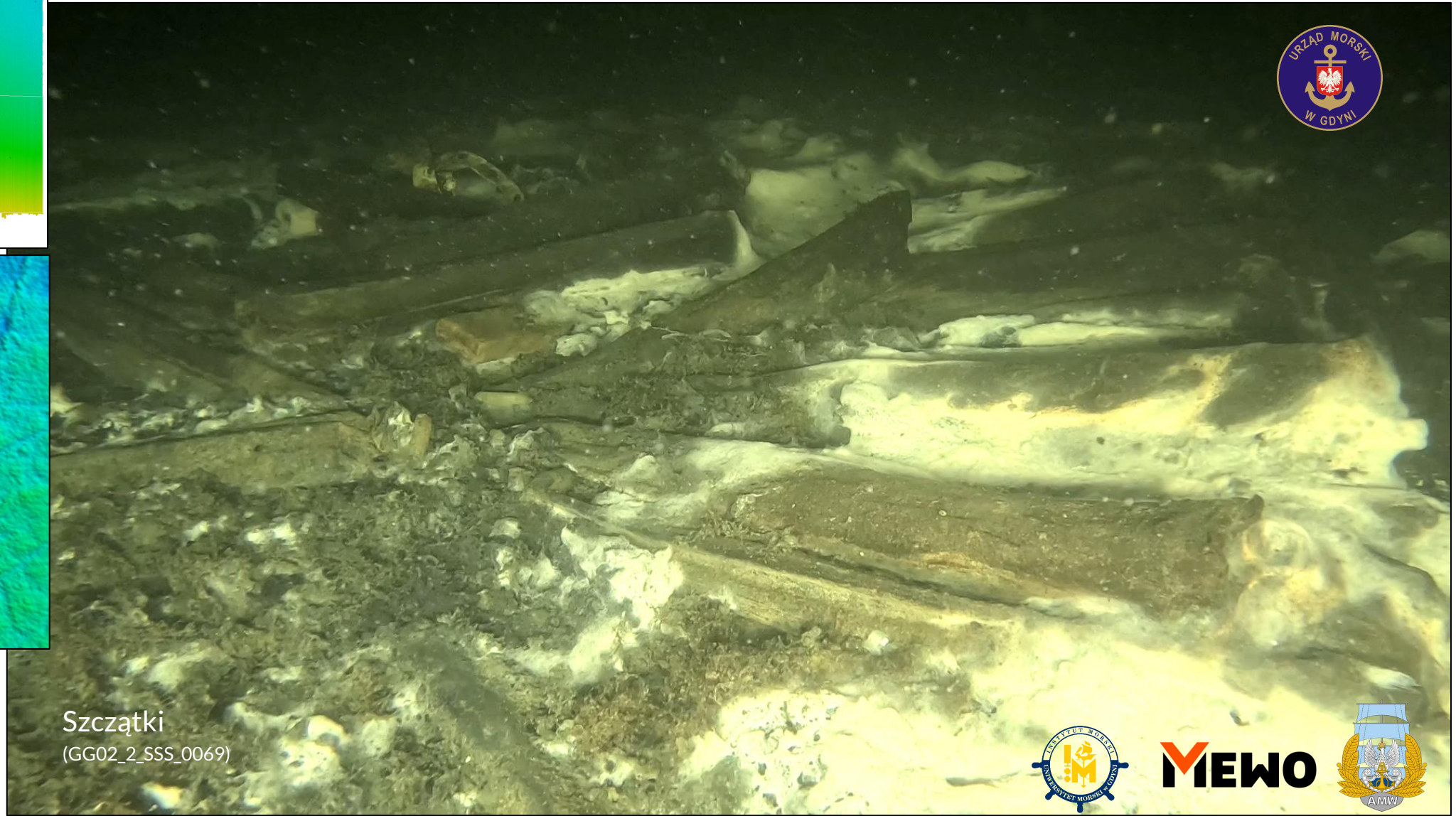
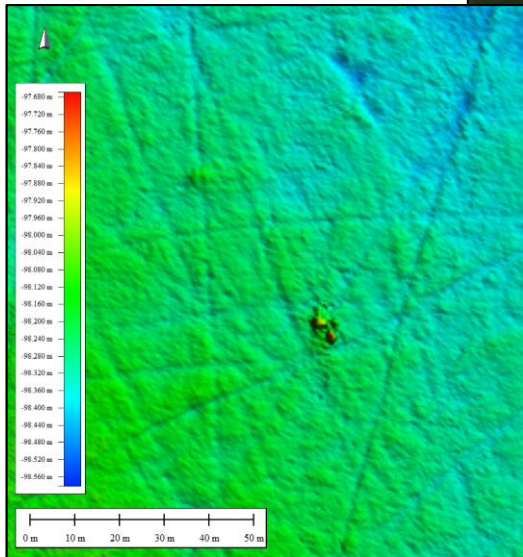
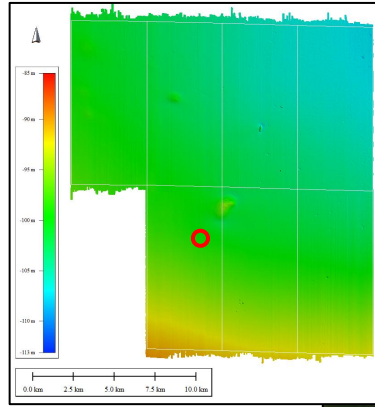


pUXO
(GG05_3_SSS_0192)



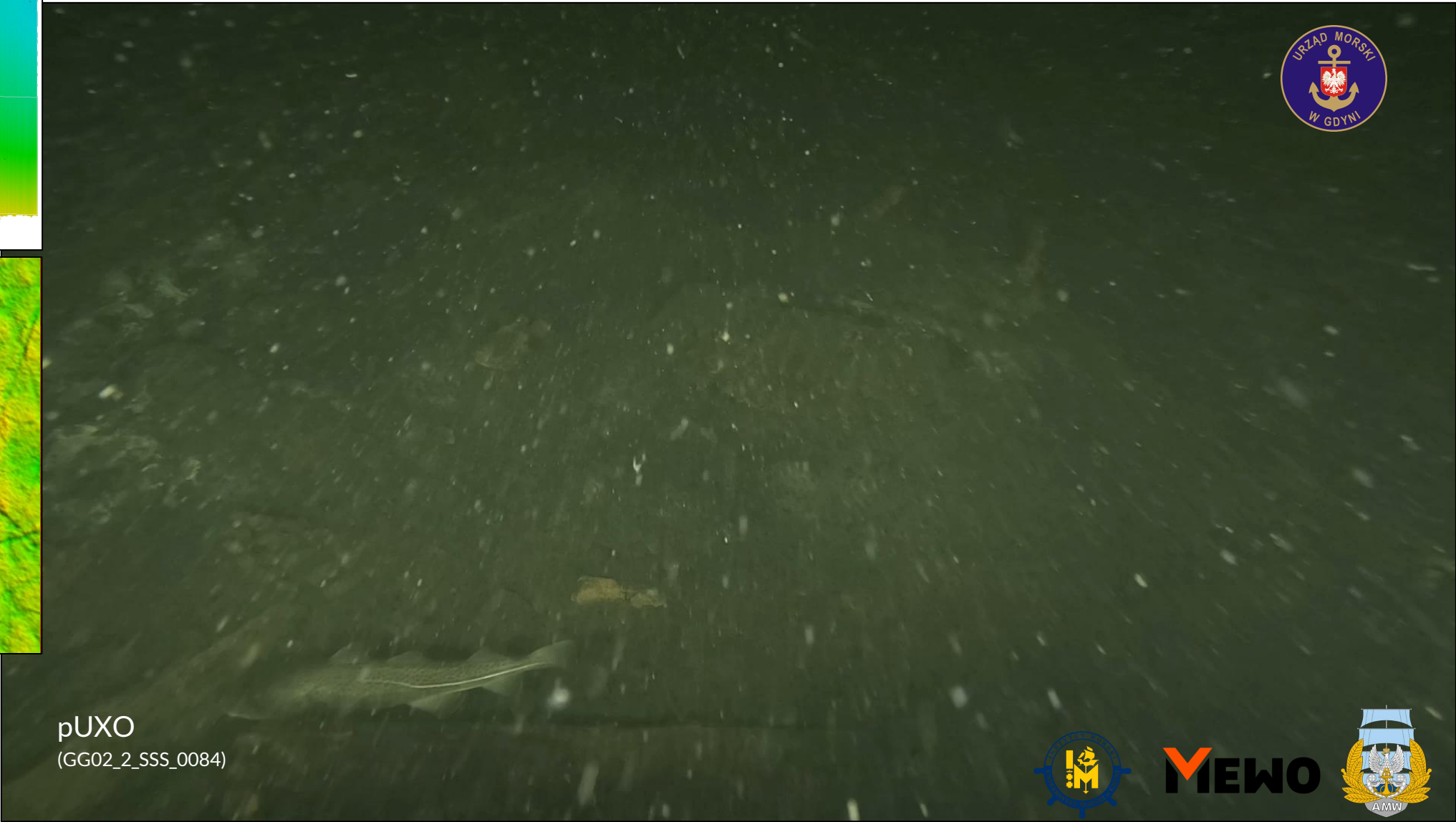
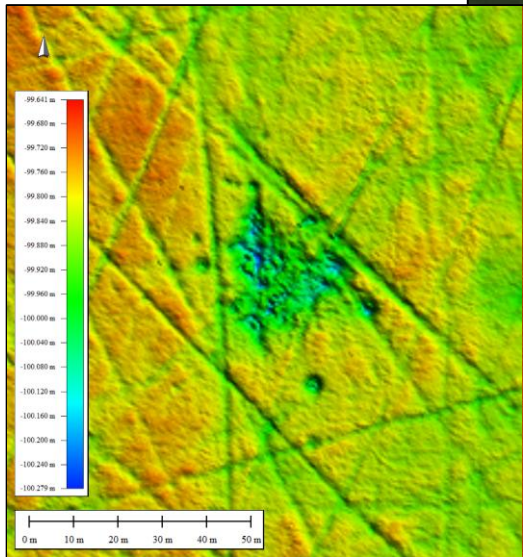
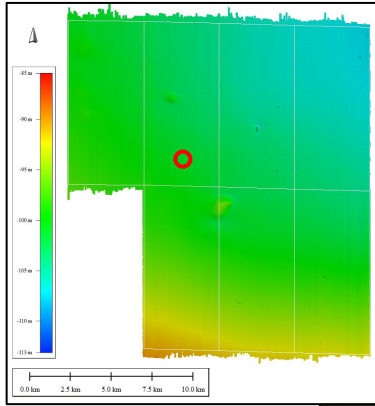
MEWO





Szczałki
(GG02_2_SSS_0069)



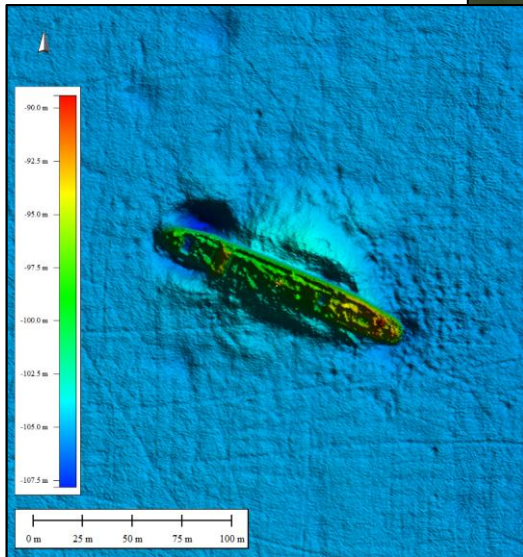
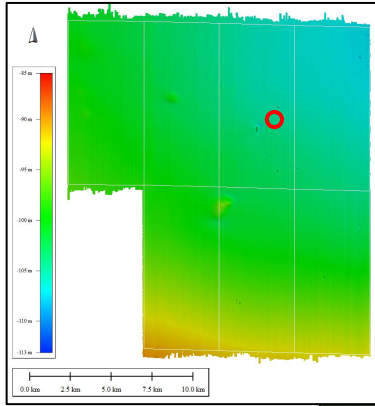


pUXO
(GG02_2_SSS_0084)



MEWO



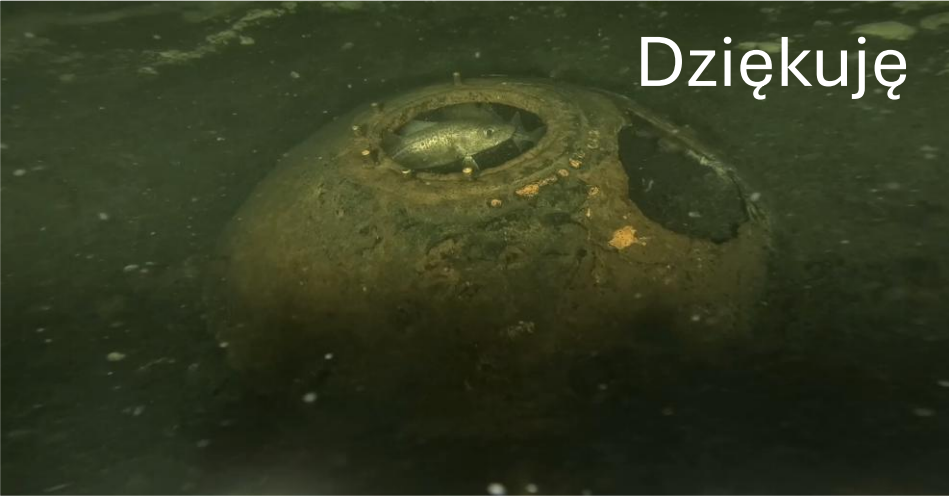
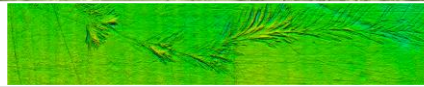
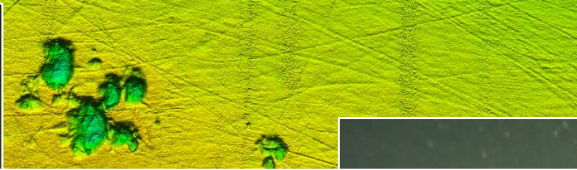


Wrak WK-0156
(GG06_SSS_0047)



MEWO





Dziękuję

