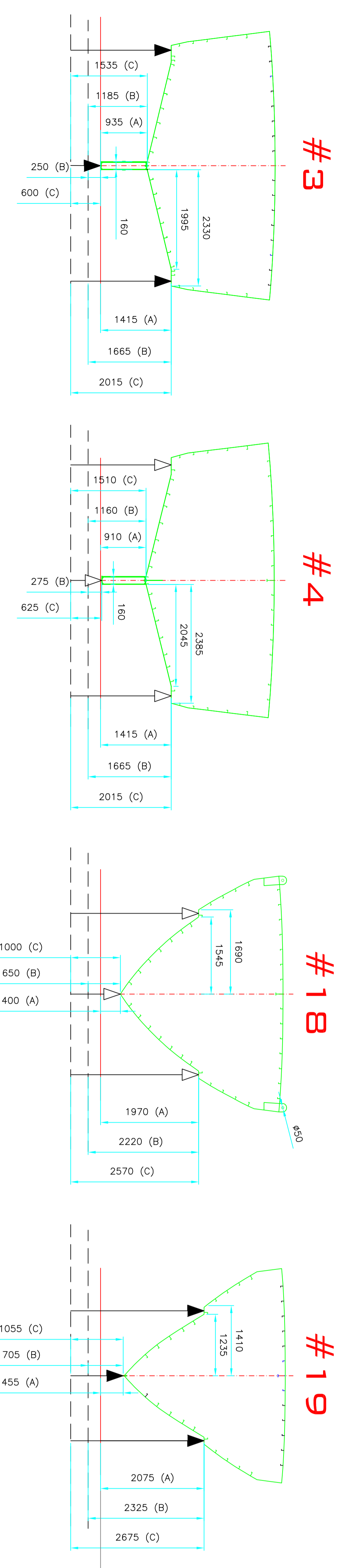


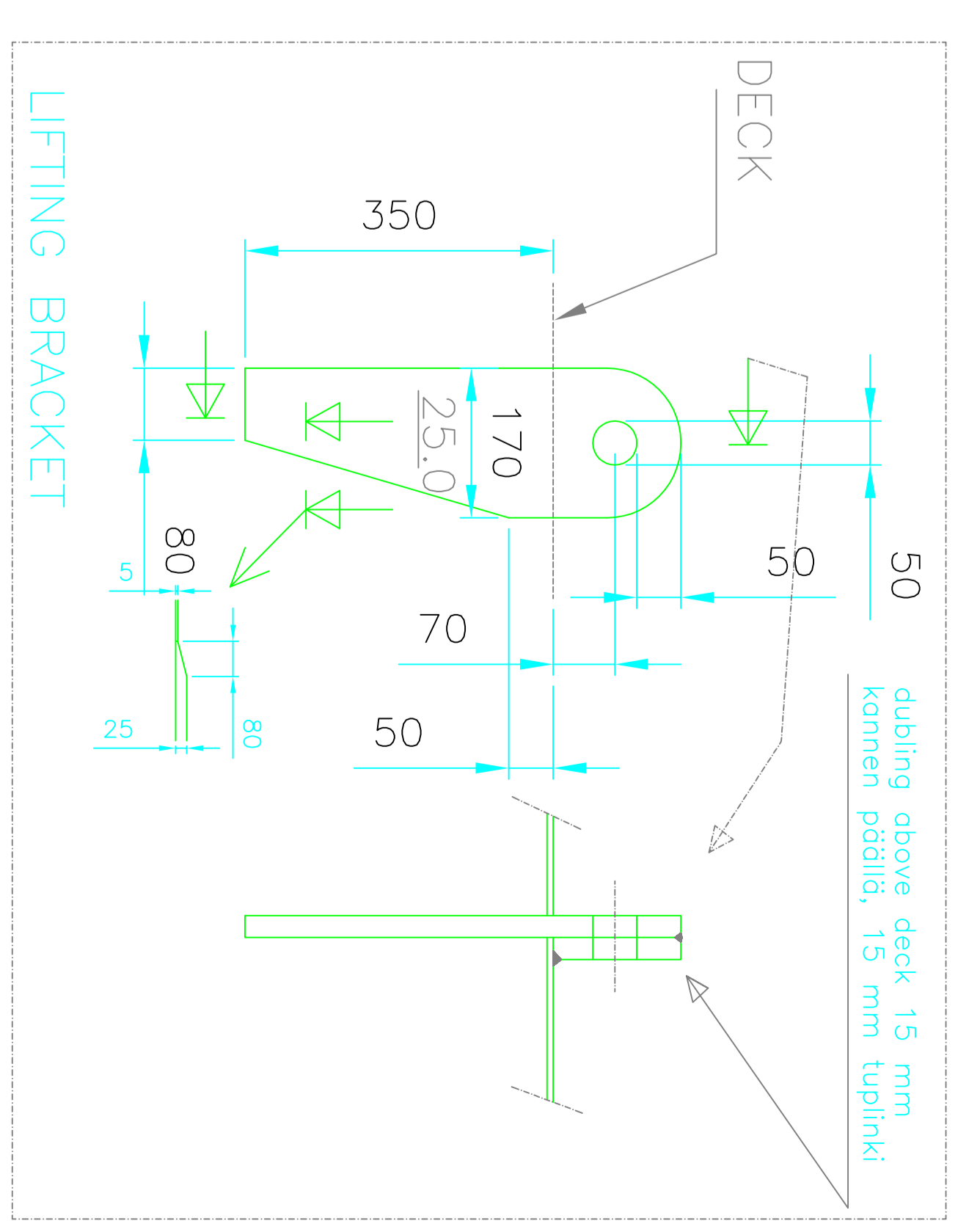
DIMENSIONS OF DOCKING SUPPORTS



- A: vessel resting on even keel, no additional clearance
- B: vessel has clearance of 250mm below baseline for drawing propeller shaft
- C: vessel has clearance of 600mm below baseline for drawing rudder

Light weight 37 ton.

Lifting with two cranes.
Recommended length of lifting ropes is 10 m.



Length o.a.	21.80	m
Length hull	21.40	m
Length w.l.	20.00	m
Breadth max with fenders	6.25	m
Breadth max hull	5.79	m
Draught max w.l.	5.35	m
Draught max abt.	1.7	m
Displacement	40.0	tonnes
Speed	21.0	knots
Main Engines	2 x 625	kW

A		FULL NAME		23.9.08		LL		2009		14		15		16		17	
B		MAGAZIN		2009		14		15		16		17		18		19	
C		MAGAZIN		2009		14		15		16		17		18		19	
D		MAGAZIN		2009		14		15		16		17		18		19	
E		MAGAZIN		2009		14		15		16		17		18		19	
F		MAGAZIN		2009		14		15		16		17		18		19	
G		MAGAZIN		2009		14		15		16		17		18		19	
H		MAGAZIN		2009		14		15		16		17		18		19	
I		MAGAZIN		2009		14		15		16		17		18		19	
J		MAGAZIN		2009		14		15		16		17		18		19	
K		MAGAZIN		2009		14		15		16		17		18		19	
L		MAGAZIN		2009		14		15		16		17		18		19	